

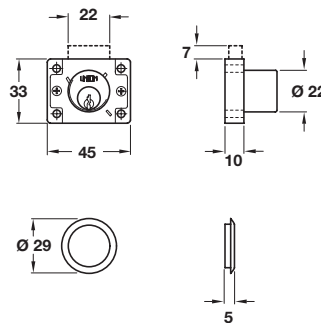
A Cylinder drawer/cupboard rim lock with deadbolt, ref 4147

- With $\varnothing 22$ mm cylinder
- Brass-plated zinc alloy deadbolt
- For wooden cupboards or drawers. Cylinder rotates to produce a drawer lock or a right or left hand cupboard lock
- Deadbolt withdrawn by key, key can be removed in locked or unlocked position
- 16 mm cylinder projection to suit **12.5 mm** material thickness
- **4 pin tumblers** = in excess of 500 different key changes
- Gold enamelled zinc alloy case, **brass** cylinder with polished brass cap
- **Accessories:** 2 keys and cylinder rosette

Random key changes	Left/Right/Drawer
Cat. No.	230.08.920
Keyed alike	Left/Right/Drawer
Key change LNK A	230.08.921
Key change LNK B	● 230.08.922
Key change LNK C	230.08.923

Packing: 1 pc

Item A.
Catalogue shows...
'zinc alloy'
Correct Finish is
'brass'



Not supplied master keyed

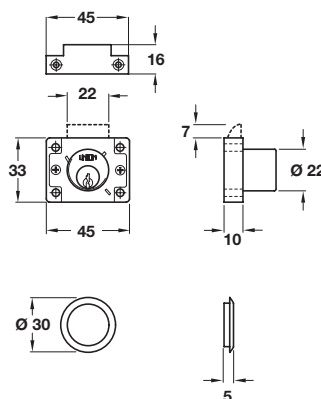
B Cylinder till/cupboard rim lock with spring bolt, ref 4148

- With $\varnothing 22$ mm cylinder
- Sprung brass-plated zinc alloy bolt
- For wooden cupboards or tills. Cylinder rotates to produce a till lock or a right or left hand cupboard lock
- Slam to shut, bolt withdrawn by key
- 16 mm cylinder projection to suit **12.5 mm** maximum material thickness
- **4 pin tumblers** = in excess of 500 different key changes
- Gold enamelled zinc alloy case, **brass** cylinder with polished brass cap
- **Accessories:** 2 keys, cylinder rosette

Keyed alike	Left/Right/Till
Key change LNK A	● 230.09.121
Key change LNK B	230.09.122
Key change LNK C	● 230.09.123

Packing: 1 pc

Item B.
Catalogue shows...
'zinc alloy'
Correct Finish is
'brass'



Not supplied master keyed