

### Stainless Steel Grade 304:

Stainless steel to EN standard No. 1.4301  
ASTM/AISI 304. 18% chromium 8% nickel

#### Spindle type

- ☐ Plain spindle
- ☐ Piercing spindle
- ☐ Slotted spindle
- ☐ Stabil spindle

See page 64 for details

#### Compatibility rating



For full explanation see page 2

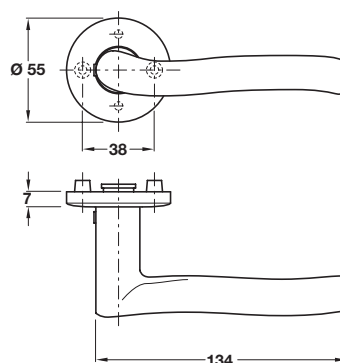
All FSB lever handles on this page suit door thickness 42-46 mm. For other door thickness please consult our sales office, as they are to special order only, subject to quantity

### A FSB 1028 lever handles

- Pair of lever handles
- Grub screw fixing on 8 mm spindle
- Pair of concealed fixing roses (order separately)
- **Unsprung**, for use with **heavy duty** followers
- Fixings not included. See page 36, item C
- To suit doors **42-46 mm** thick
- 304 stainless steel
- Matching escutcheons available, see page 193
- Fixed spindle, see page 64 for details of type
- For sprung roses, see page 37
- For recommended locks, see **Section 2** pages 4-14

Item	Finish	Cat. No.
<b>Lever handle</b>	Satin stainless steel	902.20.420
<b>Handle rose</b>	Satin stainless steel	902.50.050

Order qty: 1 pair



#### Satin stainless steel finish



FSB

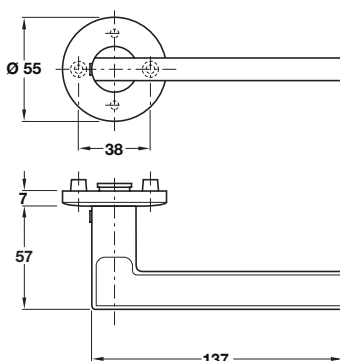


### B FSB 1035 lever handles

- Pair of lever handles
- Grub screw fixing on 8 mm spindle
- Pair of concealed fixing roses (order separately)
- **Unsprung**, for use with **heavy duty** followers
- Fixings not included. See page 36, item C
- To suit doors **42-46 mm** thick
- 304 stainless steel
- Matching escutcheons available, see page 193
- Fixed spindle, see page 64 for details of type
- For sprung roses, see page 37
- For recommended locks, see **Section 2** pages 4-14

Item	Finish	Cat. No.
<b>Lever handle</b>	Satin stainless steel	902.20.374
<b>Handle rose</b>	Satin stainless steel	902.50.050

Order qty: 1 pair



#### Satin stainless steel finish



FSB

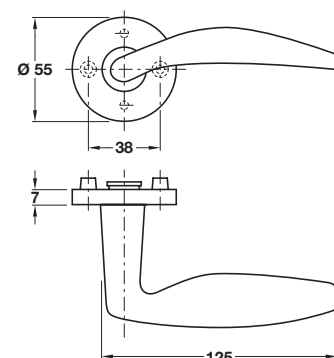


### C FSB 1057 lever handles

- Design: Jan Roth
- Pair of lever handles
- Grub screw fixing on 8 mm spindle
- Pair of concealed fixing roses (order separately)
- **Unsprung**, for use with **heavy duty** followers
- Fixings not included. See page 36, item C
- To suit doors **42-46 mm** thick
- 304 stainless steel
- Matching escutcheons available, see page 192
- Fixed spindle, see page 64 for details of type
- For sprung roses, see page 37
- For recommended locks, see **Section 2** pages 4-14

Item	Finish	Cat. No.
<b>Lever handle</b>	Satin stainless steel	902.20.202
<b>Handle rose</b>	Satin stainless steel	902.50.000

Order qty: 1 pair



#### Satin stainless steel finish



FSB

