

Lever Handles

Stainless Steel StarTec Range

HÄFELE

1



Stainless Steel Grade 304:

Stainless steel to EN standard No. 1.4301
ASTM/AISI 304. 18% chromium 8% nickel

Spindle type

- ☐ Plain spindle
- ☐ Piercing spindle
- ☐ Slotted spindle
- ☐ Stabil spindle

See page 64 for details

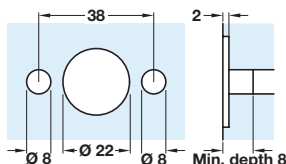
Compatibility rating



For full explanation see page 2

For all StarTec lever handles:

Drill two holes Ø 8 mm at 38 mm centres, to a minimum depth of 8 mm, and one Ø 22 mm hole to a depth of 2 mm



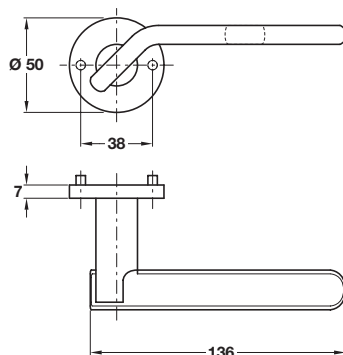
A ARCADE shaped lever handles

- Pair of lever handles
- Grub screw fixing on 8 mm spindle
- Pair of patented 'euro-fix' sprung concealed fixing, bolt through roses
- **Sprung**, for use with **standard duty** followers
- Bolt through fixings included
- To suit doors **35-44 mm** thick
- 304 stainless steel
- Matching escutcheons available, see page 195
- Spindle type, see page 64 for details
- For recommended locks, see **Section 2** pages 15-17

Finish	Cat. No.
Satin stainless steel	+ 902.21.460

Order qty: 1 pair

Discontinued when stock = 0
902.21.460 - No longer available



Satin stainless steel finish

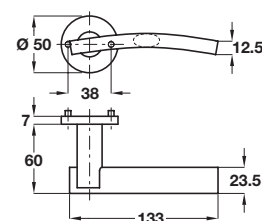


B DIVA shaped lever handles

- Pair of lever handles
- Grub screw fixing on 8 mm spindle
- Pair of patented 'euro-fix' sprung concealed fixing, bolt through roses
- **Sprung**, for use with **standard duty** followers
- Bolt through fixings included
- To suit doors **35-44 mm** thick
- 304 stainless steel
- Matching escutcheons available, see page 195
- Spindle type, see page 64 for details
- For recommended locks, see **Section 2** pages 15-17

Finish	Cat. No.
Satin stainless steel	902.21.590

Order qty: 1 pair



Satin stainless steel finish

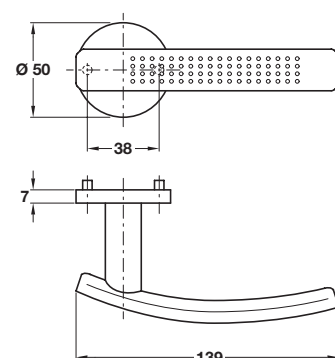


C ALLURE shaped lever handles

- Pair of lever handles
- Grub screw fixing on 8 mm spindle
- Pair of patented 'euro-fix' sprung concealed fixing, bolt through roses
- **Sprung**, for use with **standard duty** followers
- Bolt through fixings included
- To suit doors **35-44 mm** thick
- 304 stainless steel
- Matching escutcheons available, see page 195
- Spindle type, see page 64 for details
- For recommended locks, see **Section 2** pages 15-17

Finish	Cat. No.
Satin stainless steel	902.21.470

Order qty: 1 pair



Satin stainless steel finish



02.06.11/1