

Note: Door stops should be fitted at the maximum distance from the hinge as possible, but never less than 66% of the door width.

A Door stop, floor mounted

- Low pattern, 17 mm high (27 mm with pad)
- Single screw fixing
- Pin prevents turning
- Fixings included
- Aluminium or stainless steel, plastic buffer

Door stop

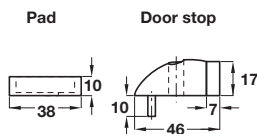
Finish	Cat. No.
Silver anodised	937.50.800
Satin stainless steel	937.60.601

Order qty: 1 pc

Pad

Finish	Cat. No.
Satin stainless steel	937.50.810
Silver anodised	937.60.611

Order qty: 1 pc



Silver anodised finish

K W S



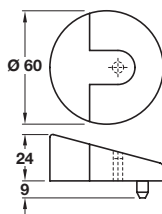
Item A.
Photo of silver anodised pad
937.60.611 added

B FSB 3816 door stop, floor mounted

- Low pattern, 24 mm high
- Single screw fixing
- Pin prevents turning
- Fixings included
- Aluminium and stainless steel, plastic buffer

Finish	Cat. No.
Silver anodised	937.50.200
Satin stainless steel	937.60.201

Order qty: 1 pc



Satin stainless steel finish

FSB

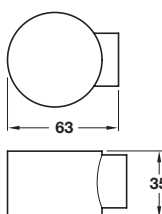


C Door stop, floor mounted

- Spring loaded buffer
- Two screw fixing
- Fixings included
- Aluminium or stainless steel, plastic buffer
- For matching door holder, see page 67

Finish	Cat. No.
Silver anodised	937.61.401
Satin stainless steel	937.52.300

Order qty: 1 pc



Satin stainless steel finish

K W S



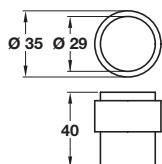
Item D.
Satin anodised aluminium finish,
item 937.62.201, added

D Door stop, floor mounted, Ø 35 mm

- Concealed floor fixing
- 40 mm high
- Fixings included
- Stainless steel or aluminium, rubber buffer

Finish	Cat. No.
Satin stainless steel	937.51.720
Polished stainless steel	937.51.701
Satin anodised aluminium	937.62.201

Order qty: 1 pc



Satin stainless steel finish

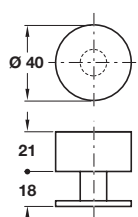


E Door stop, floor mounted, Ø 40 mm

- Concealed floor fixing
- 40 mm high
- Fixings included
- Stainless steel, rubber buffer

Finish	Cat. No.
Satin stainless steel	937.51.740
Polished stainless steel	937.51.741

Order qty: 1 pc



Satin stainless steel finish

