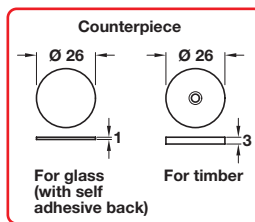
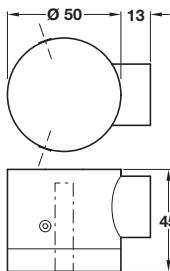


A Door holder, magnetic

- Suitable for timber and glass doors
- Concealed fixing
- Release force 120N
- Spring loaded magnet
- Black plastic height pad included
- Will hold doors up to:
Weight - 60 kg
Height - 2200 mm
Width - 1000 mm
- Fixings included
- Stainless steel or aluminium
- For matching door stop, see page 62

Item A.
Text added



Item A.
Illustrations added

Silver anodised aluminium finish

K W S



Finish	Cat. No.
Satin stainless steel	938.02.300
Silver anodised	938.02.301

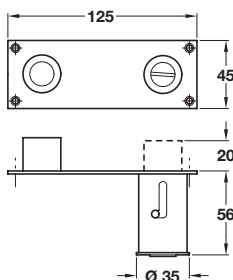
Order qty: 1 pc

B Door holder and stop, locking

- Mounted in floor
- Depress stop to hold door open or close door
- To make inoperable, depress and turn
- Fixings included
- Grade 316 stainless steel, black rubber stop

Finish	Cat. No.
Satin stainless steel	938.26.000

Order qty: 1 pc



Satin stainless steel finish



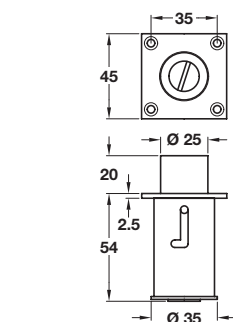
4

C Door holder and stop, locking

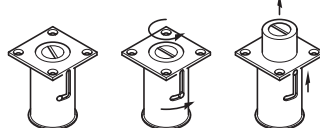
- Mounted in floor
- Depress stop to hold door open or close door
- To make inoperable, depress and turn
- Fixings included
- Grade 316 stainless steel, black rubber stop

Finish	Cat. No.
Satin stainless steel	938.09.001

Order qty: 1 pc



Lockable operation



Satin stainless steel finish

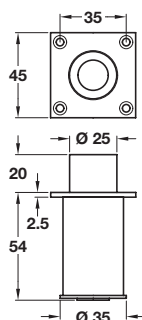


D Door holder and stop, non-locking

- Mounted in floor
- Depress stop to hold door open or close door
- Fixings included
- Stainless steel, grade 316, black rubber stop

Finish	Cat. No.
Satin stainless steel	938.09.000

Order qty: 1 pc



Satin stainless steel finish



28.10.13/2*