

# Door and Frame Protection

## Door Edge Guards, Frame Protection

Doors in hospitals suffer more than most from wear and tear resulting from high traffic levels and impact damage, yet any door in a healthcare, commercial or industrial building is likely to suffer from the loss of integrity.

With constant trolley and wheelchair traffic, it is the leading edge of the door that suffers most from 'porter damage' which not only results in general damage of the door, but also possible loss of the fire integrity of the door.

To overcome this problem a range of fire rated door edge guards are available in various sizes from 40 to 65 mm thickness and lengths up to 3 m, with longer lengths available for non-standard doors.

Door edge guards contain intumescent and smoke seals and have been fully tested up to 1/2 and 1 hour and eliminate the need for repetitive maintenance.



### A Door edge guard

- Available in flat or round edge
- 2.1 m length
- Suits new or existing fire doors
- Impact protection for both single and double fire doors
- Eliminates need for repetitive maintenance
- Fire and smoke tested up to 1/2 and 1 hour to BS 476 part 22
- New build or refurbishment
- Fixing screws included
- Silver anodised aluminium
- Available to order for 40, 42, 46 and 63 mm door thicknesses, PVC in any RAL colour and other lengths up to 3000 mm, subject to quantity

#### Rounded edge

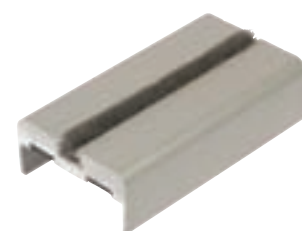
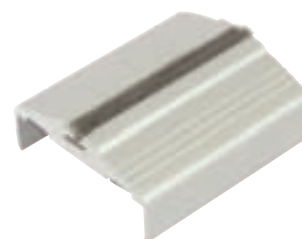
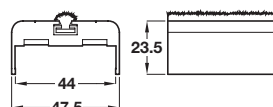
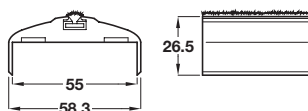
For door thickness	Cat. No.
44 mm	950.18.400
55 mm	950.18.401

Order qty: 1 pc

#### Flat edge

For door thickness	Cat. No.
44 mm	950.18.410

Order qty: 1 pc



### B Rotary door frame corner protector

- Designed to protect the door frame edge from damage from wheelchairs, trolleys, hoists etc.
- To suit frame legs 25 x 25 mm
- Fixings included
- Aluminium

Height	800 mm
Finish	Cat. No.
Silver anodised	950.24.009
White	950.24.007

Order qty: 1 pc

