

A Floor spring mechanism and box

• Specification:

Floor springs mechanisms to suit single and double action doors up to **1250 mm** wide with flat-tapered, removable interlocked spindle
Adjustable closing force, adjustable closing speed, backcheck and variable hold-open, engageable/disengageable 80-120° or non hold-open versions. Delayed action version. Spring opening and operationable from 175°. Supplied with cement box

• Features:

Closing force adjustable (size range EN 2-5)
Adjustable closing speed
Adjustable position within box (6 mm vertical, 10 mm lateral and 10 mm length)
Backcheck
Safety valve prevents overloading
Closing range from 175°
Suitable for single and double action doors
Maximum door weight **250 kg**
Delayed action (specific floor spring)
Cover plate **B** not included, order separately
Fittings not included (see below)

• Certification

Tested and approved to BS EN 1154:1997
Tested to conform to CE requirements
Certifire approved. CF259

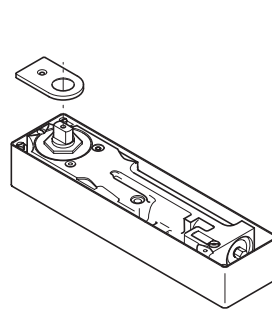
Type	Cat. No.
Selectable hold-open version	940.05.339 ●
Non hold-open version	● 932.10.020
Delayed action version	● 940.07.501

Order qty: 1 pc

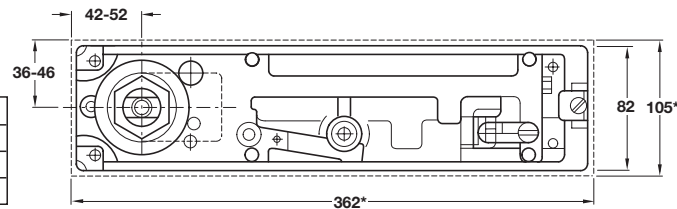
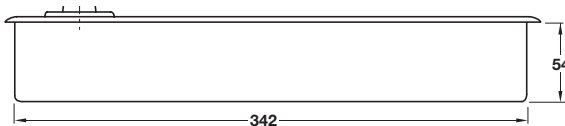
Discontinued
Offer alt. no. 932.10.061

Discontinued ●
Discontinued when stock = 0 +

For more information and other floor springs refer to Section 6, from page 59



Size	Max. door width	Min. closing moments
2	850 mm	13 Nm
3	950 mm	18 Nm
4	1100 mm	26 Nm
5	1250 mm	37 Nm

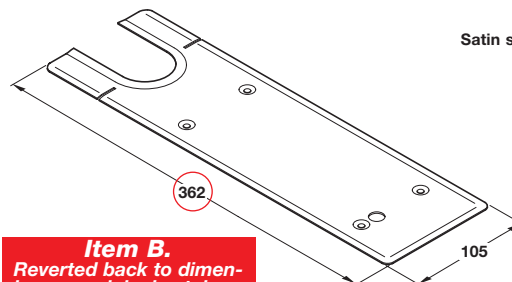


B Floor spring cover plate

- Corners adjacent to pivot may be removed for single action applications
- To suit timber or metal doors
- Stainless steel or brass

Finish	Cat. No.
Satin stainless steel	932.10.110
Polished stainless steel	932.10.119
Polished brass	932.10.118

Order qty: 1 pc



Satin stainless steel finish



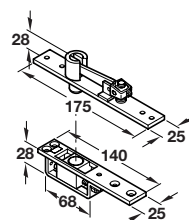
Item B.
Reverted back to dimensions on original catalogue page of 362 mm

C Standard duty double action top centre

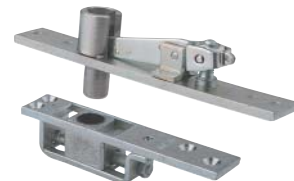
- Adjustable retractable upper pivot for double action doors
- To suit timber or metal doors
- Lateral adjustment between 36-58 mm
- Recommended min. depth of head frame 50 mm
- **Fixing screws included**
- Mild steel. Zinc plated

Cat. No.	932.10.410
----------	------------

Order qty: 1 pc



Galvanized finish



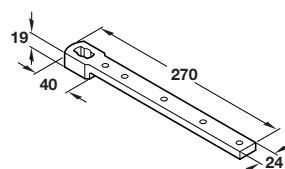
Items C and D.
Text reverted back to original catalogue specification as fixings screws are included

D Double action bottom strap

- To suit timber or metal doors
- **Fixing screws included**
- Drop forged steel. Zinc plated

Cat. No.	932.10.270
----------	------------

Order qty: 1 pc



Galvanized finish



06.11.12/8*