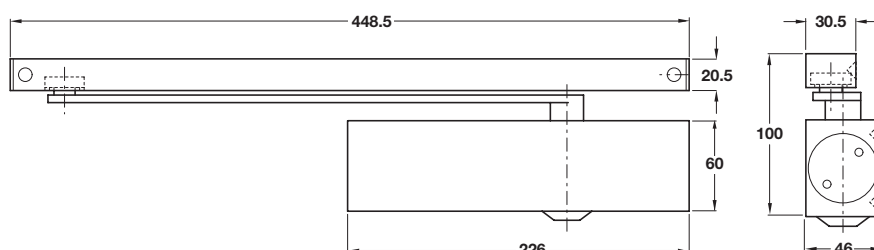


BS EN 1154



Silver finish



A TS 3000 BC overhead rack and pinion guide rail door closer

• Specification:

Surface mounted eccentric rack and pinion door closer with guide rail arm for doors up to 1100 mm with adjustable closing force, backcheck, hydraulic latching action and eccentric rack and pinion for easier opening

Valve adjustable latching and closing on the front of closer

• Features:

- Eccentric rack and pinion
- Non projecting guide rail arm
- Closing force adjustable (size range EN 1-4)
- Backcheck
- Valve adjusting latching speed
- Valve adjusting closing speed

• Models

Standard (Fig 1, Fig 61)

• Options (see page 25-27 for details)

- Hold open insert (not for fire doors)
- T-stop guide rail
- Mounting plate
- Fig 1 glass clamping plate
- Fig 1 glass mounting plate

• Certification

- Tested and approved to BS EN 1154: 1997
- Tested to conform with CE requirements
- Certifiere approved; certificate no. CF145
- 120 mins timber

• Material:

Aluminium body and guide rail. Mild steel arm
Electro-plated mild steel cover (not suitable for external use)*

• Also available:

Electro-mechanical hold-open versions (see page 48)

Fig 66 version - information on request

- A door stop should always be used for non backchecked doors, and where practical for backchecked doors, and at least 66% of the door width away from the hinge. Alternative would be to fit a T-stop guide rail (see page 26)

TS 3000 BC: Fig 1/61

Finish	Cat. No.
Silver	931.11.069
Satin stainless steel*	931.11.070
Polished stainless steel*	931.11.071
Polished brass*	931.11.078

Order qty: 1 pc

15.06.11/1*

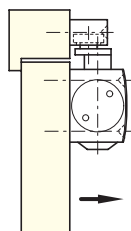


Fig 1 Standard application
Closer is fixed to the pull side of the door

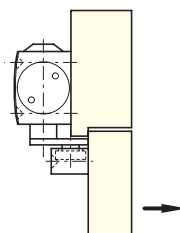


Fig 61 Transom application
Closer is fixed to the push side of the door (overhead installation)

Closing force

Size	Max. door width	Min. closing moments
1	750 mm	9 Nm
2	850 mm	13 Nm
3	950 mm	18 Nm
4	1100 mm	26 Nm