



A OFK 700 EQ laminate trimmer

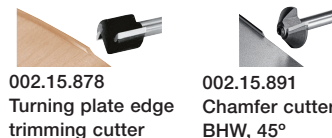
- Plug in router table with larger surface area enables safe tool guidance
- Follower spring allows smooth startup and routing pattern
- Exact routing depth setting with the integrated fine adjustment device for flush trimming of surfaces and edge projections
- The follower pad with ball bearing pilot makes precise, streak-free working on the edge bending possible
- No special routing tools required
- When follower shoe is pushed, the entire width of the cutter blade can be used
- Optimum dust extraction, for horizontal and vertical use through the plug in connection
- Secure guidance through an ergonomically designed housing and switch operation
- **Supplied with:** Systainer case, Ø 1/4" clamping collet, Dust extraction hood, Edge trimming cutter 19 x 16 mm, Operation tool

Technical data	
Power consumption	720W
Speed (rpm)	10000 - 26000
Clamping width	8 mm
Max. cutting depth, vertical	9 mm
Max. cutting depth, horizontal	5 mm
Routing width	Max. 14 mm
Connection for dust extraction	Ø 27 mm
Weight	2.0 kg
240V	+ 002.16.004

Order qty: 1 pc

B Cutting tools

- For use with OFK 700 EQ laminate trimmer
- Shaft Ø 8 mm
- Tungsten carbide tipped



Item	Ø/Usable length (mm)	Cat. No.
Edge trimming cutter HW, GL 46 mm	19/16	+002.15.879
Turning plate edge trimming cutter HW, GL 43 mm	19/43	+002.15.878
Chamfer cutter HW, 22°	24/14	+002.15.889
Chamfer cutter HW, 30°	24/12	+002.15.890
Chamfer cutter HW, 45°	24/10	+002.15.891
Turning plate chamfer cutter HW, 22°	24/12	+002.15.892
Turning plate chamfer cutter HW, 45°	26/12	+002.15.893
Reversible blade HW-WP 12x12x1.5 (4x)		+002.15.751
Ogee cutter with ball bearing guide HW, R2	17.1/9	+002.15.894
Ogee cutter with ball bearing guide HW, R3	19.1/10	+002.15.895
Ogee cutter without ball bearing guide HW, R2	18/9	+002.15.896
Ogee cutter without ball bearing guide HW, R3	20/10	+002.15.897

Order qty: 1 pc



Discontinued •
Discontinued when stock = 0 +



C OFK 500 Q laminate trimmer

- Direct connection of the spindle and the cutter makes high tuning precision
- Workpiece protected by hard fibre base runner
- Lockable settings enable routing to precise depths of 1/10 mm accuracy
- Quick and easy cutter change using the spindle stop
- Plug it concept eliminates cable breaks
- Router table flattens at the side enabling safe positioning and removal of workpieces
- Chip extractor provides protection against wood and dust chips
- Cutter blades can be re-sharpened
- **Supplied with:** Systainer case, Chamfer cutter HW R3-OFK, Extractor hood, Operation tool

Technical data	
Power consumption	450W
Speed	28000 rpm
Connection for dust extraction	Ø 27 mm
Weight	1.4 kg
240V	+ 002.16.001

Order qty: 1 pc

D Classic ogee cutter HW

- Ø 27 mm
- Tungsten carbide tipped



Item	Radius	Cat. No.
HW R2-OFK	2 mm	+ 002.15.881
HW R3-OFK	3 mm	+ 002.15.882
HW R4-OFK	4 mm	+ 002.15.883
HW R5-OFK	5 mm	+ 002.15.884
HW R6-OFK	6 mm	+ 002.15.885
Ball bearing guide KLS-D15, 8-OFK		+ 002.15.872

Order qty: 1 pc

E Chamfer cutter HW

- Ø 27 mm
- Tungsten carbide tipped

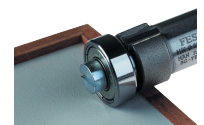


Item	Angle	Cat. No.
HW 60°-OFK	60°	+ 002.15.886
HW 45°-OFK	45°	+ 002.15.887
HW 30°-OFK	30°	+ 002.15.888
Ball bearing guide KLS-D15, 8-OFK		+ 002.15.872

Order qty: 1 pc

F Edge trimming cutter HW

- Ø 22 mm, 8 mm width
- Tungsten carbide tipped



Item	Cat. No.
HW D22/8-OFK without ball bearing guide	+002.15.870
HW KLS D22/8-OFK with ball bearing guide	+002.15.880
Ball bearing guide KLS-D22-OFK, for 002.15.870 only	002.15.871 +

Order qty: 1 pc