



A KliKlump

- Lightweight and easy to use
- Good clamping pressure quickly applied through use of lever ratchet

Opening x Depth	Cat. No.
200 x 80 mm	003.71.103
250 x 80 mm	003.71.104

Order qty: 1 pc



B UniKlump

- A smaller lighter duty clamp designed to compliment the KR-Body series, item E
- Removable head so clamp can be used as a spreader

Opening x Depth	Cat. no.
300 x 80 mm	003.72.722
600 x 80 mm	003.72.723

Order qty: 1 pc



C Spring clamp

- With infinitely variable adjustment and 'softpads'

Opening x Depth	Cat. No.
55 x 37 mm	003.75.200
100 x 50 mm	003.75.210

Order qty: 1 pc



D Spring clamp

- With infinitely variable adjustment and 'softpads'

Opening x Depth	Cat. No.
35 x 75 mm	003.75.110
50 x 50 mm	003.75.120
75 x 70 mm	003.75.130

Order qty: 1 pc

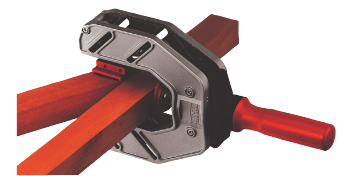


E KR-body clamp

- Non-slip mechanism
- Clamping pressures up to 7000 Nm
- Large area fixed and sliding jaws
- Entire reach can be used, right up to the rail
- Jaws always stay parallel in every position
- Even pressure across the clamping jaws
- With 3 supporting pressure caps for extra protection
- Attach KR-AS adapter for extra reach
- Super polyamide casings, resistant to glue

Opening x Depth	Cat. No.
300 x 95 mm	003.72.620
600 x 95 mm	003.72.621
800 x 95 mm	003.72.622
1000 x 95 mm	003.72.623
1250 x 95 mm	003.72.624
1500 x 95 mm	003.72.625
2000 x 95 mm	003.72.626
2500 x 95 mm	003.72.627
KR-AS adapter kit	003.72.690

Order qty: 1 pc



F One-handed edge clamp

- One-hand operation with ergonomically shaped grip
- With double spindle: Outer spindle operates opposing pair of pressure plates
Inner spindle for lateral pressure from outside
- Flexible mounted pressure plates with removable plastic pads
- No colour stains due to micro-coated surface
- 0.85 kg weight
- Aluminium housing, yellow chromatised pressure plates, impact-resistant plastic grip

Jaw length/Opening	Cat. No.
0-45 / 10-55 mm	003.73.830

Order qty: 1 pc



G C edge clamp

- A sturdy forged clamp to glue edges, corners and edge binding strips
- Projection: 80 mm
- Tools width: 48 mm
- Opening surface: 38 mm
- Weight: 2.4 kg
- Forged steel

Opening	Cat. No.
80 mm	003.71.755

Order qty: 1 pc



H Edge clamp

- A supplementary tool which when clamped to the profile rails of adjustable clamps, helps to solve special clamping problems, such as clamping of strips or edge bonding strips

	Cat. No.
Edge clamp	003.71.719

Order qty: 1 pc