

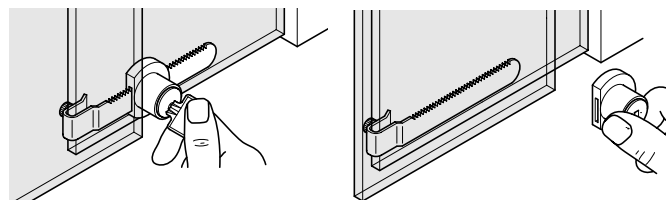
A End cap push-button cylinder lock

- For two door cabinets using the Labora sliding glass door system
- For installation on the end of glass door profile
- For glass panels from **4-6 mm** and **8 mm**
- **5 pairs of pin tumblers** = 10,000 possible key changes
- Matt chrome-plated zinc alloy housing and brass cylinder
- **Accessories:** 2x keys
- ***Master key and general master key systems:** When ordering, please state left or right hand and glass thickness required
- This lock is for use with **Labora** sliding glass door fittings shown in **Section 9**, pages **93-95**

Random key changes		
Application	Left	Right
4-6 mm glass	233.13.617	233.13.608
8 mm glass	233.13.813	233.13.804
Keyed alike: Key change H1		
Application	Left	Right
4-6 mm glass	233.13.662	233.13.653
8 mm glass	233.13.868	233.13.859

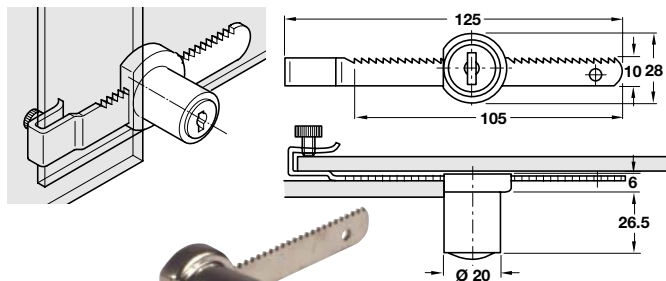
Order qty: 1 pc

With master key system:*	
Cat. No.	233.13.698
With general master key system:*	
Cat. No.	233.13.699



On closing the doors, slide the cylinder to the left and lock onto the rack

To open, remove the cylinder from the right hand end of the rack

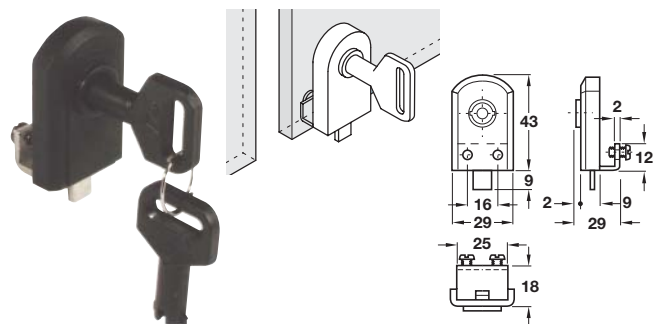


B Glass door cylinder lock with rack

- For glass panels from **4-8 mm**
- **5 plate levers** = 100 possible key changes
- Matt nickel-plated steel rack
- Matt nickel-plated zinc alloy housing and cylinder
- **Accessories:** 2x keys

Random key changes PL 3001 - 3999	
Cat. No.	233.01.700
Keyed alike: Key change 1 N 7921 PL	
Cat. No.	233.01.701

Order qty: 1 pc



C Glass door lock, no drilling required

- Clamps to glass with two set screws; pad is included to protect the glass
- For **6 mm** glass panels
- Bolt travel = 9 mm
- Closure travel: **180°**
- Key is removable in both locked and unlocked position
- Plastic coated steel
- **Accessories:** 2x keys and 1x protective pad

Finish	Cat. No.
Black	233.12.600

Order qty: 1 pc