

**Discontinued** •  
**Discontinued when stock = 0** +

### A System 400 steel shelf

- Slotted filing shelf for use with shelf supports for System 400 and 460
- Box type profile construction
- Epoxy coated steel

Format	2 x FC	3 x FC
Installation width	882 mm	1294 mm
Grey	424.94.557	424.94.566

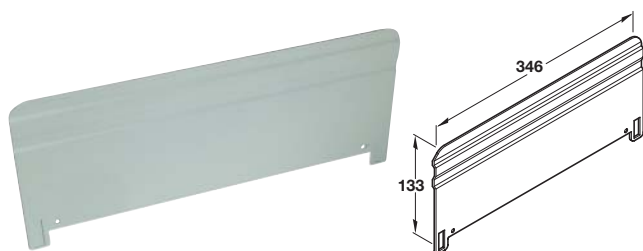
Order qty: 1 pc

### B System 460 steel shelf

- Slotted filing shelf for use with shelf supports for System 400 and 460
- Box type profile construction
- Epoxy coated steel

Format	2 x A4	3 x A4
Installation width	767 mm	1122 mm
Grey	424.94.520	424.94.539

Order qty: 1 pc

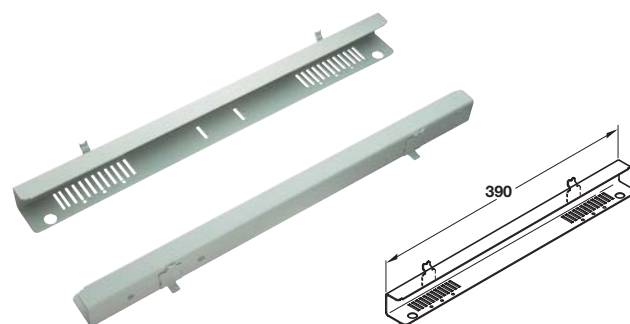


### C Partitions for System 400/460 shelves

- For slotting into steel shelf
- Epoxy coated steel

Finish	Cat. No.
Grey	424.93.505

Order qty: 1 pc

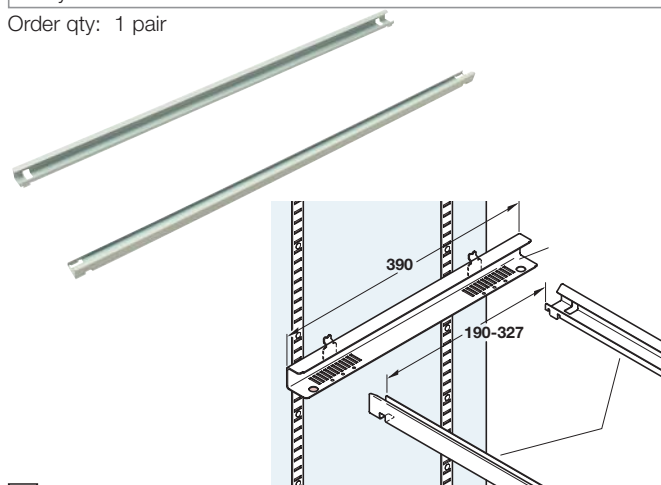


### D Filing end rails for System 400/460 shelves

- With slots and holes for mounting hanging rails
- Lugs at the ends of the bars, slot into the end rails
- Spacing allows for A4 front to back format
- Epoxy coated steel

Finish	Cat. No.
Grey	424.70.502

Order qty: 1 pair

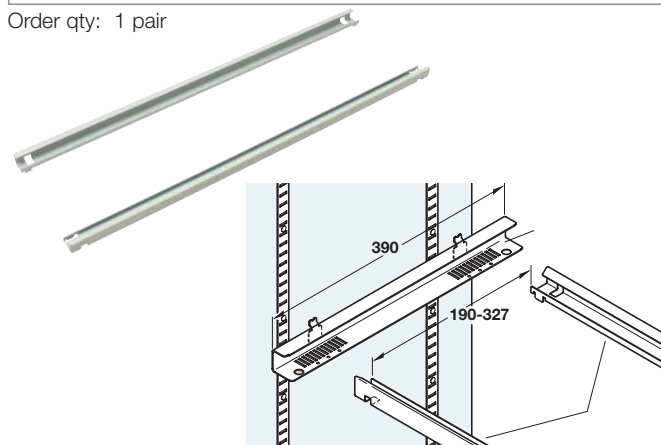


### E System 400 hanging rail

- Lugs at the ends of the bars, slot into the end rails
- Epoxy coated steel

Format	2 x FC	3 x FC
Installation width	882 mm	1294 mm
Grey	424.71.554	424.71.563

Order qty: 1 pair



### F System 460 hanging rails

- Lugs at the ends of the bars, slot into the end rails
- Epoxy coated steel

Format	2 x A4	3 x A4
Installation width	767 mm	1122 mm
Grey	424.71.527	+ 424.71.536

Order qty: 1 pair