

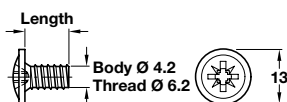
### A Variant-S 400 (A4 front to back)

- Steel systems filing frame designed to be used on its own or with the selection of accessories shown on the following pages
- Pre-drilled ready for installation behind a drawer front if required
- Frame sides are fully designed to cover the runners
- Pre-mounted concealed locking cams
- Plastic edge protection and corner mouldings
- Spring clip system
- Epoxy coated steel

Format (horizontal) for 2 x A5	2 x A4	2 x EDP	3 x A4	X	Y
Inst. width, runner A	580 mm	780 mm	980 mm	1180 mm	21 27
Inst. width, runner C	562 mm	762 mm	962 mm	1162 mm	12 18
Light grey (RAL 7035)	425.00.522	425.00.523	425.00.524	425.00.525	
Black (RAL 9011)	425.00.322	*425.00.323	*425.00.324	425.00.325	

Order qty: 1 pc

\*Can be used behind drawer, if used behind doors, the cranked engagement tab in the side of the frame needs to be moved inwards



### B Drawer front mounting screw

- For Ø 5 mm holes to secure wooden drawer fronts
- Galvanized steel

Length	Cat. No.
14 mm	013.10.149
28 mm	013.10.283

Order qty: Multiples of 100 pcs



### C Front panel supports

- Use on both sides of the frame for maximum stability
- Epoxy coated steel

For drawer height	from 250 mm
Light grey (RAL 7035)	424.00.902
Black (RAL 9011)	424.00.911

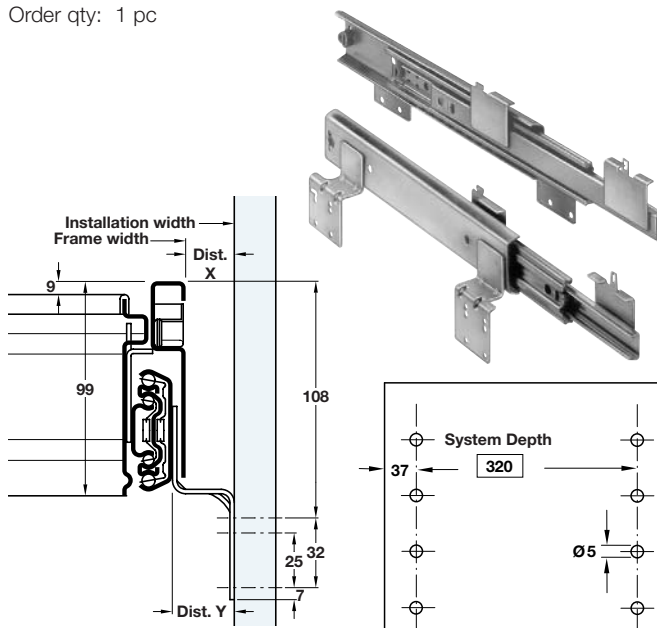
Order qty: 1 pair

### D Hanging rail

- For subdividing frames into required filing sizes
- Epoxy coated steel

Finish	Cat. No.
Light grey (RAL 7035)	425.12.520
Black (RAL 9011)	425.12.320

Order qty: 1 pc



### E Drawer runners for system 400

- Designed for Variant S and SL frames
- Full extension
- "Z" shaped carcass and bracket configuration allows for all widths of frame
- 50 kg carrying capacity
- Ball bearing cage action
- Progressive extension
- Hold back buffer
- Bright galvanized steel
- **Please note:** Central locking bar shown on page 100 only works with runner size A, 424.05.005

Runner size	Dist. Y	Cat. No.
A	27 mm	424.05.005
C	18 mm	424.05.023

Order qty: 1 pair