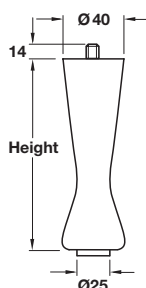




**Important note:** Unless otherwise indicated fixing screws are not included and must be ordered separately.

The symbol shown next to the drawing indicates the type and size of screw required.

**Fixing materials** can be found in **Section 15** from page **3**.

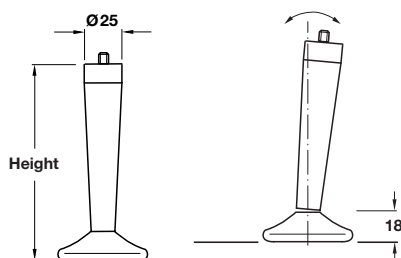


## A Cabinet foot

- With M10 threaded bolt
- For installation with screw-in sleeve **D** or mounting plates **B** or **C**
- Polished aluminium with plastic glide

Height	Cat. No.
140 mm	634.18.002

Order qty: 1 pc



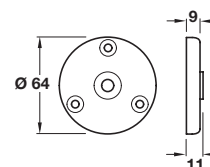
## B Furniture foot

- With M10 threaded bolt
- With ball jointed plate
- For installation with screw-in sleeve **F** or mounting plates **D** or **E**
- Polished aluminium with felt glide

Height	Cat. No.
310 mm	634.17.003

Order qty: 1 pc

**Carrying capacity is dependant on the type of material, size and weight of the construction**

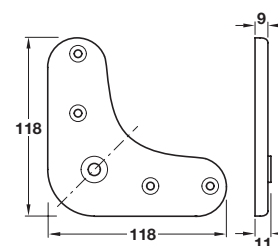


## B Mounting plate, round

- With M10 tapped hole for installation of cabinet foot
- Adds 9 mm to installation height of cabinet foot
- Polished aluminium

	Cat. No.
Mounting plate	634.15.091

Order qty: 1 pc



## C Mounting plate, triangular

- With M10 tapped hole for installation of cabinet foot
- Adds 9 mm to installation height of cabinet foot
- Polished aluminium

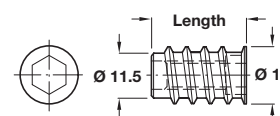
	Cat. No.
Mounting plate	634.15.092

Order qty: 1 pc



## E M10 screw-in sleeve

- For installation of furniture feet
- With hexagon socket and lip
- Bright steel



Length	Outer Ø	Core Ø	Cat. No.
20 mm	18.5 mm	15 mm	030.10.906

Order qty: Multiples of 100 pcs