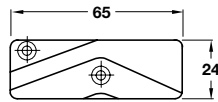


Photograph shows left hand

Illustration shows right hand



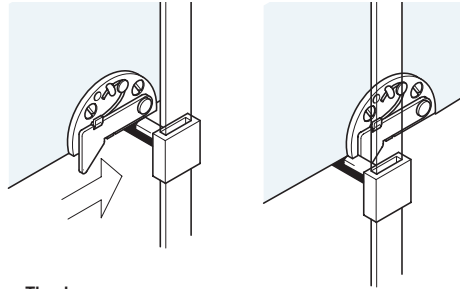
**A Anti tilt cam, 2 hole fixing**

- This item is handed, please order left or right hand
- Black plastic

	Left hand	Right hand
Cat. No.	237.01.877	237.01.868

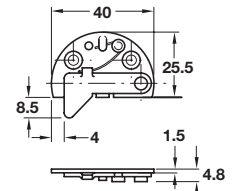
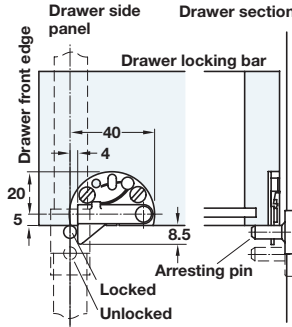
Order qty: Multiples of 10 pcs

Installation of a right handed drawer catch



The drawer can be closed even with the pin in the locked position

... but then it is locked



**C Drawer catch**

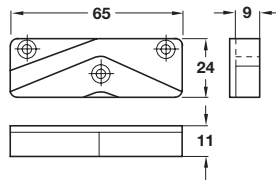
- Nickel-plated steel

	Left hand	Right hand
Cat. No.	237.16.752	237.16.707

Order qty: 1 pc

Photograph shows left hand

Illustration shows right hand

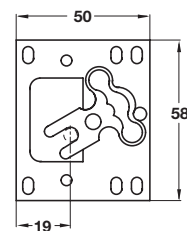


**B Anti-tilt cam, 3 hole fixing**

- This item is handed, please order left or right hand
- Black plastic

	Left hand	Right hand
Cat. No.	237.01.895	237.01.886

Order qty: Multiples of 10 pcs



**D Arresting catch**

- To be used as an alternative to ball catch, but only for recess mounting
- This item can be situated anywhere along the bar, over an additional arresting pin
- For left and right hand use
- Galvanized steel

	Cat. No.
Arresting catch	237.01.993

Order qty: 1 pc