

Required number of paper racks per drawer

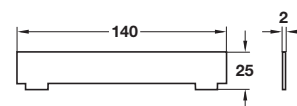
Panel height	For drawer depth	For drawer depth
System 32	500 mm	700 mm
160 mm	5	8
192 mm	7	11
224 mm	8	13

A Inclined paper tray

- For organising DIN A4 forms
- For placing into drawers
- With variable angle adjustment
- Black (RAL 9011) plastic
- **Installation note:** Use dividers to subdivide system drawers in depth. Additional front panel supports must be mounted for drawer panel heights of 187 mm and above

Installation width	W x D x H	Cat. No.
380 mm	319 x 212 x 35 mm	429.76.301

Order qty: 1 pc

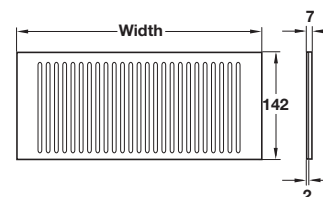
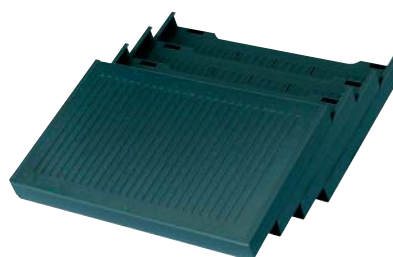


B Divider

- For press fitting into inclined paper racks
- W x D x H: 140 x 2 x 25 mm
- Plastic

Colour	Cat. No.
Black, (RAL 9011)	429.76.395

Order qty: 1 pc



C Cover

- For sliding into the end of the paper rack
- Black (RAL 9011) plastic

For installation width	W x D x H	Cat. No.
380 mm	319 x 142 x 7 mm	429.76.332

Order qty: 1 pc