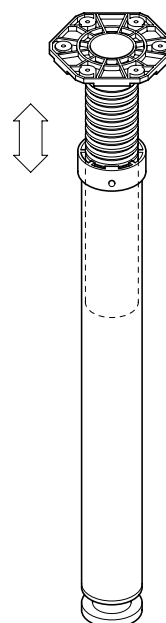
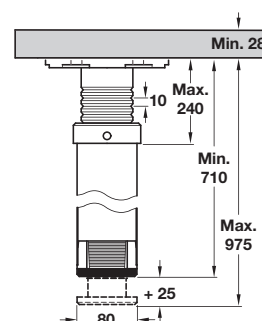
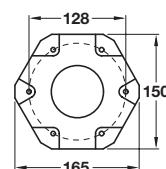


#### A Adjustable leg, Ø 50 mm

- For supporting worktops, table tops or desks
- Height adjustable between **710 to 920 mm**
- With **+210 mm** height adjustment
- Black aluminium screw fixing mounting plate
- Tubular brushed satin nickel plated steel leg

| Finish                  | Cat. No.   |
|-------------------------|------------|
| Brushed stainless steel | 635.08.971 |

Order qty: 1 pc



#### B Adjustable peninsular support leg, Ø 80 mm

- Telescopic assembly allows full length adjustability between **710 to 975 mm**
- Tubular steel leg with black plastic adjustable mounting plate and fittings
- Height adjustment at both ends of the leg
- Black plastic height adjustable foot giving +25 mm adjustment
- **These legs should not be used for stand-alone tables, only for fixed peninsular supports**

| Finish | Cat. No.   |
|--------|------------|
| Chrome | 635.22.270 |

Order qty: 1 pc