

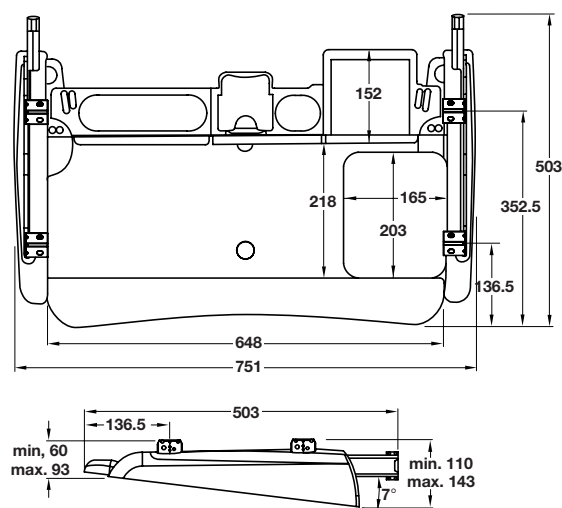
Fixing positions at 5.5 mm intervals

A Standard keyboard tray

- Single extension
- Concealed ball bearing runner with "hold in" and "hold out" feature
- Removable foam rest with heavy duty lycra® to accommodate any size keyboard
- Ergonomic design
- Unhanded mouse surface
- Cable management fixtures in back of tray
- **34 kg** carrying capacity
- Variable height brackets
- Black powder coated steel

	Cat. No.
Keyboard tray	632.52.300

Order qty: 1 pc



Fixing positions at 5.5 mm intervals

B Deluxe keyboard tray

- Full extension
- Concealed ball bearing "hold in" and "hold out" and intermediate hold feature
- Adjustable keyboard angle:
 - 7 degrees negative
 - 3.5 degrees negative
 - 0 degrees
- Additional storage compartments for:
 - Pencils and pens
 - CD's and floppy discs
 - Paper clips and other small items
 - Post-it notes® and business cards
- Removable gel palm rest with heavy duty lycra® to accommodate any size keyboard
- Unhanded mouse surface
- Cable management fixtures in the back of tray
- **45 kg** carrying capacity
- Variable height brackets
- Black powder coated steel

	Cat. No.
Keyboard tray	632.52.310

Order qty: 1 pc