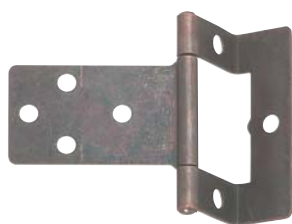


Lid stay

- Screw mounted to side panel and lid
- Unhanded design
- Spring holds lid in position
- For heavier loads 2 lid stays should be used
- **Note:** Mounting dimensions are dependent on lid weight and size. Refer to Section 6 page 97
- Fixings not included
- Nickel-plated steel brackets with polypropylene housing

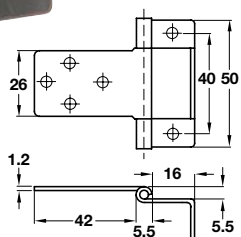
Housing colour	Cat. No.
Black	372.19.300
Brown	372.19.100
White	372.19.700

Order qty: 1 pc



Cranked flush hinge

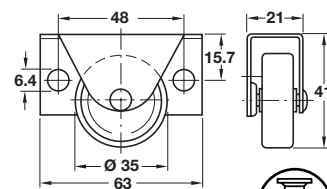
- Non mortice, for medium duty applications
- Normally for 15-16 mm door thicknesses
- With fixed pin
- Fixings not included
- Steel



Finish	Cat. No.
Electro brassed	351.96.519
Florentine bronzed	351.96.117
Zinc-plated	351.96.910

Order qty: Multiples of 10 pcs

See Section 10 for full range of Castors

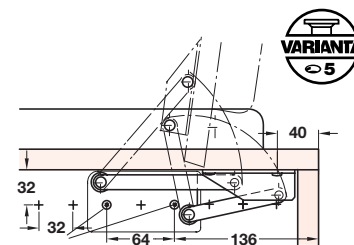


Fixed castor for underbed boxes

- Low installation height and easy to move on carpeted floors
- Height x width x depth: 41 x 21 x 63 mm. Wheel Ø 35 mm.
- With side fixing mounting plate
- Without brake or swivel
- Load carrying capacity approx 40 kg per castor
- Fixings not included
- Steel housing, plastic wheel

Housing/Wheel finish	Cat. No.
Galvanized/White	660.98.904

Order qty: Multiples of 10 pcs



Bench seat hinges

95° seat opening

Approximately 110 mm of forward movement allows for thickly upholstered seats

Built in stop prevents seat top from slamming



Bench seat hinge, with spring

- For seat tops weighing 8 kg or 12 kg max
- The spring counter balances the weight of the seat top to assist opening, spring on both sides
- Fixings not included
- Galvanized yellow steel

Weight	Spring finish	Cat. No.
8 kg	Burnished	643.01.515
12 kg	Galvanized yellow	643.01.524

Order qty: 1 pair



Bench seat hinge, without spring

- For light weight seat tops
- Fixings not included
- Steel

Finish	Cat. No.
Galvanized yellow	643.01.506

Order qty: 1 pair