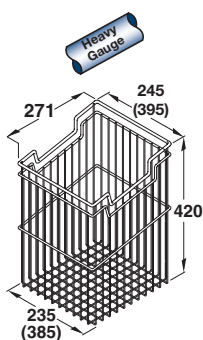




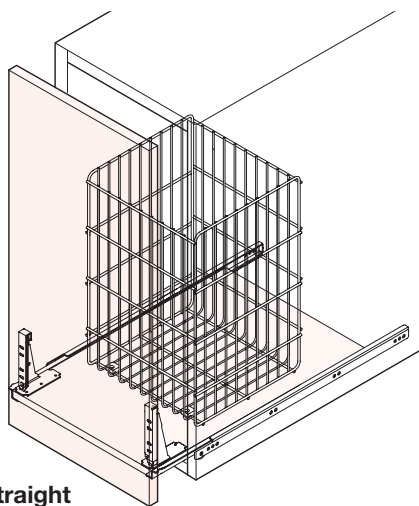
### Laundry basket, angled

- Designed higher at the front than the back so it fits into a cabinet with the door front hinged at the base instead of the side
- Basket height x depth: 420 x 271 mm
- Suitable for 300 or 450 mm wide cabinets
- With lowered handle spaces
- Front fixing for hanging on mounting rail
- Chrome plated steel wire
- Mounting rail, flap stay and catch are not included**, please order separately - see right for details



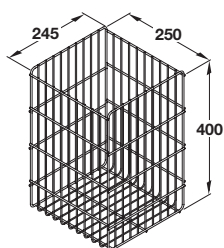
For cabinet width	Basket width	Capacity	Cat. No.
300 mm	235/245 mm	23.5 litres	540.49.231
450 mm	385/395 mm	39.0 litres	540.49.233

Order qty: 1 pc



### Laundry basket, straight

- Can be mounted onto a shelf base using fastening blocks or to tilting door front flap using mounting rail, flap hinge and catch
- Height x width x depth: 400 x 250 x 245 mm
- Suitable for min. 300 mm wide cabinets
- Polished chrome plated steel wire
- For runners for use with shelf based version refer to **Section 9**
- Mounting rail, flap stay and catch or fastening block are not included**, please order separately - see right for details

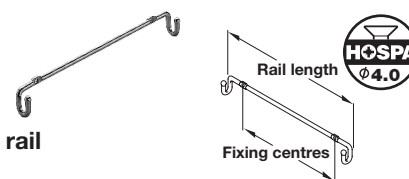


For cabinet width	Cat. No.
Min. 300 mm	540.11.219

Order qty: 1 pc

**Mounting rail, flap hinge and catch**, for use with angled or straight laundry baskets with tilting door fronts:

**Hinges** also required - refer to **Section 8**



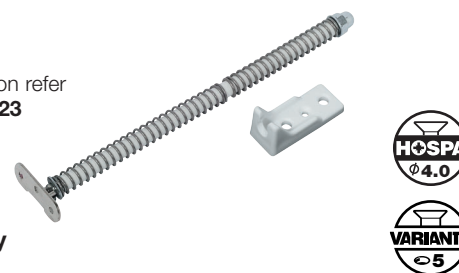
### Door front mounting rail

- Chrome plated steel

Rail length	Fixing centres	Cat. No.
170 mm	100 mm	540.49.238
215 mm	160 mm	540.49.239

Order qty: 1 pc

For further information refer to **Section 8** page **123**



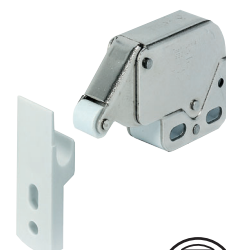
### Flap-Ex flap stay

- Comprises:
  - 1x Angular bracket, 32 mm screw fixing centres, nickel-plated steel
  - 1x Rod with plastic sleeve
  - 2x Washers
  - 2x Spiral springs: front 126 mm long, rear 90 mm long
  - 1x Bearing, screw fixing, packed loose, white plastic

	Cat. No.
Flap-Ex flap stay	365.52.708

Order qty: 1 pc

For further information refer to **Section 7** page **83**



### MINI-LATCH automatic spring catch

- Screw fixing
- Nickel-plated steel catch: 27 x 34 x 11 mm
- White plastic counterpiece: 35.5 x 11 x 11 mm

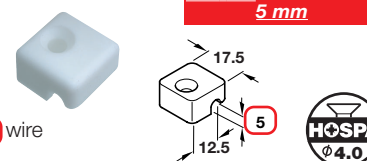
	Cat. No.
MINI-LATCH automatic spring catch	245.54.701

Order qty: 1 pc

**Fastening block**, for use with straight laundry baskets when mounted onto a shelf base:

**Runners** also required - refer to **Section 9**

**Catalogue shows 2.5 mm**  
**Correct dimension is 5 mm**



### Fastening block

- For fastening max. **Ø 5 mm** wire
- Plastic

Finish	Cat. No.
White	540.67.720

Order qty: 1 pc