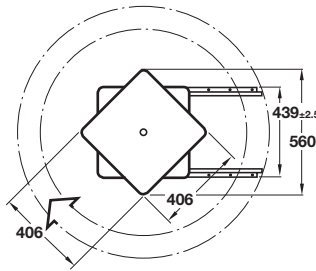




Single Extension

Accuride CB3620-258TV extending TV turntable

- Hold-in prevents roll out and bounce back
- Single extension
- **100 kg** carrying capacity
- 360° turntable range
- Shelf thickness minimum 19 mm
- Depth: 62 mm
- Supporting shelf to be custom made
- Fixing materials included
- Ensure all fixing holes are used
- Shelf must be securely fixed to turntable, TV must be securely fixed to shelf
- Black zinc-plated steel



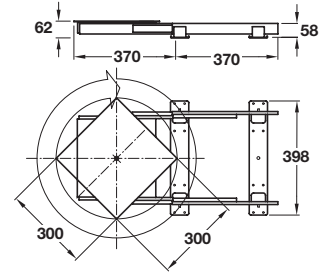
Installation length	Extension length	Cat. No.
394 mm	356 mm	423.91.300

Order qty: 1 pc



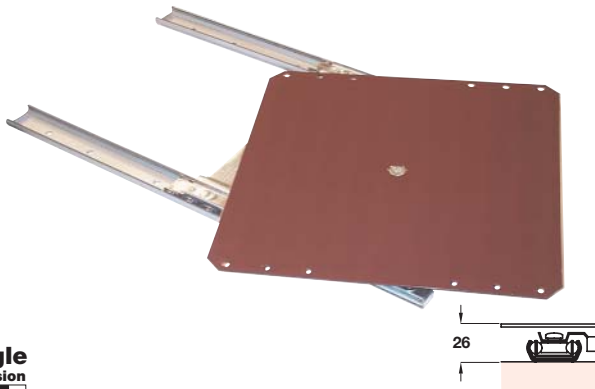
Extending TV turntable

- Full extension
- **60 kg** carrying capacity
- 360° turntable range
- Depth: 62 mm
- Attach cabinet shelf firmly to side panels
- Wood screws or chipboard screws must only be used in the front rail attachment area
- Attach rear cross rail of extensions rail or rear extension rail using raised head bolts for through-hole installation
- White plastic coated turntable; galvanised runners



Installation length	Extension length	Cat. No.
370 mm	370 mm	423.90.705

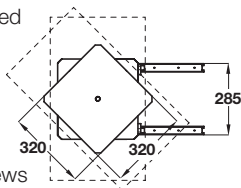
Order qty: 1 pc



Single Extension

Extending TV turntable

- Single extension, precision ball cage guided
- **70 kg** carrying capacity
- 360° turntable range
- Depth: 26 mm
- Supporting shelf to be custom made
- Fasten to cabinet base with Ø 6 mm screws
- Ensure all fixing holes are used
- Shelf must be securely fixed to turntable
- Galvanized steel guides and brown plate



Installation length	Extension length	Cat. No.
377 mm	207 mm	423.99.100

Order qty: 1 pc



Exclusive Handle Designs from Häfele

See Section 4

TCH 2013, © Häfele U.K. Ltd 2013. Dimensional data not binding. We reserve the right to alter specifications without notice.