

Photo and illustration amended

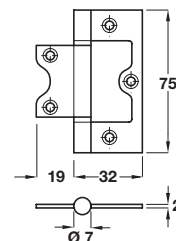
Steel flush butt hinge

- Provides 180° door opening
- Flush fixed pin
- No recessing of door or frame
- Fixing screws not included
- Steel



Length x width	75 x 49 mm	
Finish	Zinc-plated	Electro brassed
Cat. No.	926.81.109	926.81.105

Order qty: 1 pc



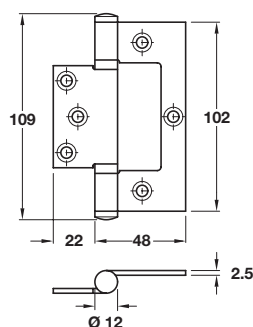
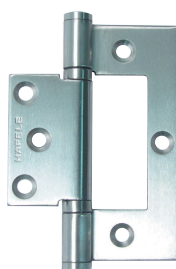
Steel flush butt hinge

- Provides 180° door opening
- Flush fixed pin
- No recessing of door or frame
- Fixing screws included
- Steel



Length x width	75 x 51 mm
Finish	
Satin chrome-plated	926.89.104
Polished chrome-plated	926.89.102
Polished brass-plated	926.89.108

Order qty: 1 pc



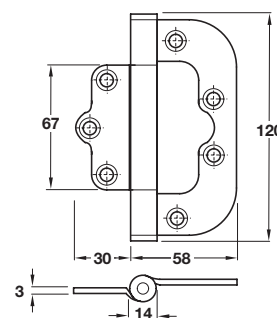
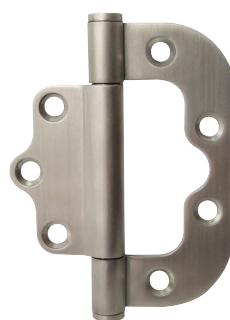
Stainless steel flush butt hinge

- Unhanded
- Maximum adjusted door weight 45 kg
- Non-mortice application
- Suitable for timber or aluminium frames
- Fixed pin, two ball bearing knuckles
- Fixing screws included for timber and aluminium
- Grade 304 stainless steel



Length x width	102 x 70 mm	
Finish	Satin	Polished
Cat. No.	926.97.001	926.97.004

Order qty: 1 pc



Stainless steel interleaf flush hinge

- Maximum adjusted door weight 100 kg
- Minimum door thickness 44 mm
- Allows for 4 mm gap for peripheral seals
- No requirement to mortice door and frames
- Fast fix installation, ideal for metal doors and/or frames
- Maintenance free
- Fixing screws for timber included
- Grade 304 stainless steel



Length x width	120 x 88 mm
Finish	Satin
Cat. No.	926.91.140

Order qty: 1 pc