

The Dialock DT Lite door terminal set is compatible with the Dialock system

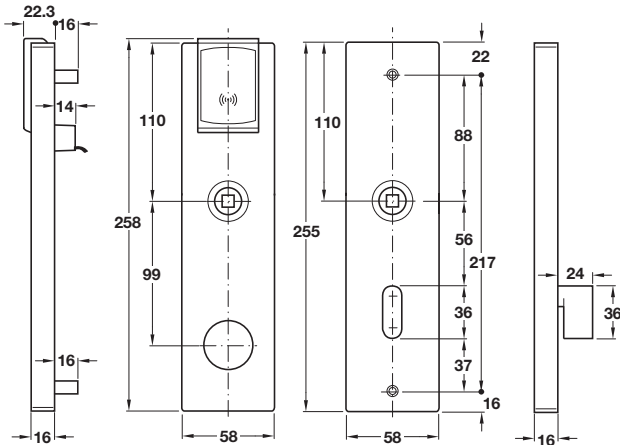
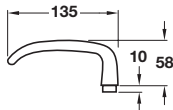
- Suitable for use in combination with macro programming
- Audit trail of all processes
- Integration with hotel management software is possible
- **Note:** The following components are required for one door:  
Dialock DT Lite door terminal set  
Dialock DT Lite mortise lock  
Battery  
Dialock DT Lite round cylinder  
Threaded screw M5



917.56.000 Left hand



917.56.010 Right hand



Backplate external module with processor

Backplate internal module



Dialock DT lite door terminal set

- With Tag-it™ ISO processor
- For interior doors **38-56 mm** thick
- Battery operated intelligent reading station
- Red/green LEDs for indication of locking and unlocking
- With real time clock and audit trail of all processes
- The door can be opened without a key at any time from the inside
- Standard setting: Unlocking with Dialock key and automatic locking after 3 seconds
- Other setting: Unlocking and locking with Dialock key
- Indication of programming status and when battery change is required
- Stainless steel door backplate (covers) and lever handle aperture parts
- Indication of programming status and when battery change is required
- Infrared interface in external module for programming
- Extension of functions by means of additional macro programmes (optional)
- For an optional mechanical emergency opening a round cylinder must be used

Finish	Left hand	Right hand
Matt stainless steel	917.56.000	917.56.010

Order qty: 1 pc