

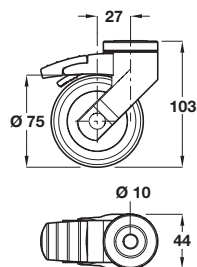
Swivel castor, Ø 75 mm wheel, with Ø 10 mm pin hole

Photo shows version
with brake



> Ø 10 mm pin and mounting
plates are shown on pages
110-111

- > For use with Ø 10 mm pin
- > Precision bearing for smooth operation
- > Integral thread guard for reduced dirt/dust ingress
- > Silver grey RAL 7001 plastic housing, grey non-marking thermo-plastic rubber wheel and red plastic brake
- > Order qty: 1 pc

Wheel Ø	Load capacity	Without brake	With brake
Ø 75 mm	75 kg	661.64.500	661.64.510

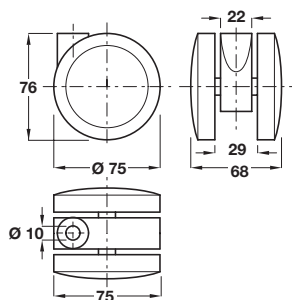
Twin wheel swivel castor, Ø 75 mm wheels, with Ø 10 mm pin hole

Photo shows version
with brake



> Ø 10 mm pin and mounting
plates are shown on pages
110-111

- > For use with Ø 10 mm pin
- > Silver coloured RAL 9006 plastic housing, mid grey non-marking rubber wheel and black plastic brake
- > Order qty: 1 pc

Wheel Ø	Load capacity	Without brake	With brake
Ø 75 mm	80 kg	660.91.235	660.90.235

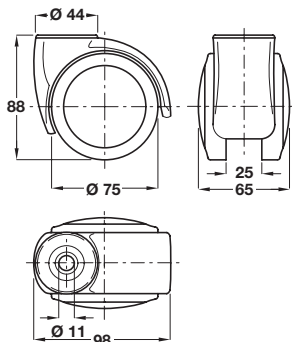
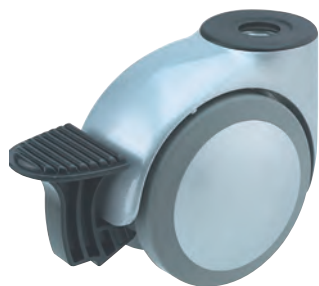
Twin wheel swivel castor, hooded, Ø 75 mm wheels, with Ø 11 mm pin hole

Photo shows version
with brake



> Ø 11 mm pin and mounting
plates are shown on pages
110-111

- > For use with Ø 11 mm pin
- > Silver coloured RAL 9006 plastic housing, mid grey non-marking rubber wheel and black plastic brake
- > Order qty: 1 pc

Wheel Ø	Load capacity	Without brake	With brake
Ø 75 mm	100 kg	660.91.245	660.90.245