

## Swivel castor, Ø 80 mm wheel, with Ø 10 mm pin hole

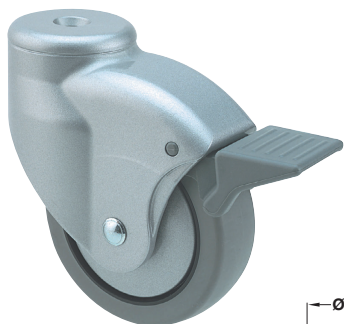
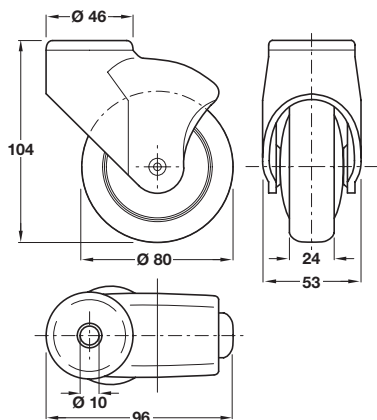


Photo shows version  
with clip brake

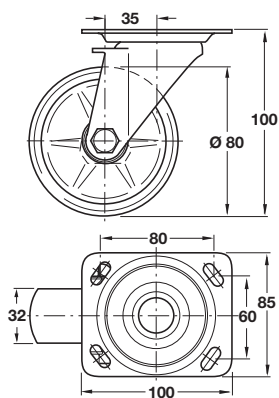


> Ø 10 mm pin and mounting  
plates are shown on pages  
**110-111**

- > For use with Ø 10 mm pin
- > Integral thread guard for reduced dirt/dust ingress
- > Clip brake version is designed to slow an application down when applied
- > Silver coloured RAL 9006 plastic housing, mid grey non-marking rubber wheel and mid grey plastic brake
- > Order qty: 1 pc

Wheel Ø	Load capacity	Without brake	With clip brake
Ø 80 mm	70 kg	663.29.201	663.28.201

## Swivel castor, Ø 80 mm wheel,, plate fixing



- > With screw on 100 x 85 mm mounting plate
- > Two enclosed ball races are fitted in the ring mount
- > Galvanized steel bracket
- > Black polypropylene wheel with friction bearing on steel spindle and hollow steel hub
- > Order qty: 1 pc



Wheel Ø	Load capacity	Without brake
Ø 80 mm	100 kg	670.01.405