

CASTORS WITH Ø 100 MM WHEELS

Swivel castor, Ø 100 mm wheel, with Ø 10 mm pin hole

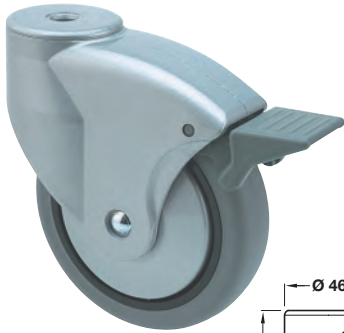
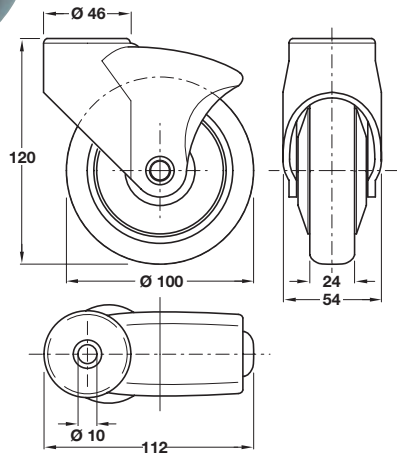


Photo shows version with brake

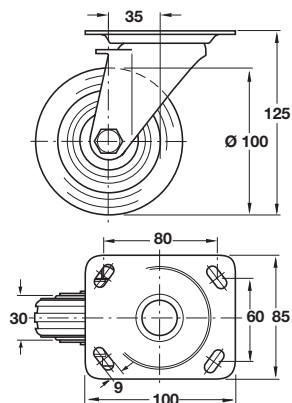


> Ø 10 mm pin and mounting plates are shown on pages 110-111

- > For use with Ø 10 mm pin
- > Integral thread guard for reduced dirt/dust ingress
- > Silver coloured RAL 9006 plastic housing, mid grey non-marking rubber wheel and mid grey plastic brake
- > Order qty: 1 pc

Wheel Ø	Load capacity	Without brake	With brake
Ø 100 mm	70 kg	663.29.202	663.28.202

Swivel castor, Ø 100 mm wheel, plate fixing



- > With screw on 100 x 85 mm mounting plate
- > Two enclosed ball races are fitted in the ring mount
- > Maintenance free roller bearings in the hollow steel hubs secured with hub nuts
- > Galvanized steel bracket and wheel, solid rubber profiled tyre
- > Order qty: 1 pc



Wheel Ø	Load capacity	Without brake
Ø 100 mm	70 kg	670.01.218