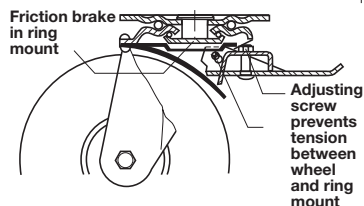
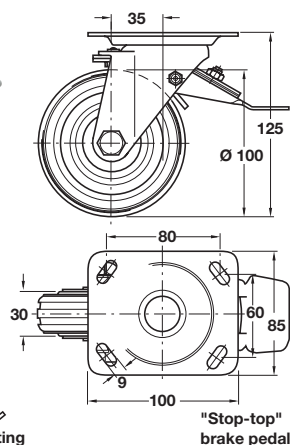
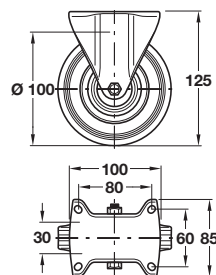


Swivel castor, Ø 100 mm wheel, plate fixing

- > With screw on 100 x 85 mm mounting plate
- > Foot operated brake stops wheel rotation and rolling action simultaneously when brake pedal is applied
- > Brake is adjustable to compensate for tread, wear and tear
- > Two enclosed ball races are fitted in the ring mount
- > Maintenance free roller bearings in the hollow steel hubs secured with hub nuts
- > Galvanized steel bracket and wheel, solid rubber profiled tyre
- > Order qty: 1 pc



Wheel Ø	Load capacity	With brake
Ø 100 mm	70 kg	670.03.212

Fixed castor, Ø 100 mm wheel, plate fixing

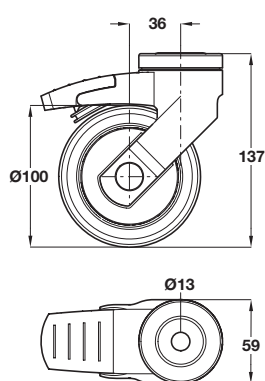
- > With screw on 100 x 85 mm mounting plate
- > Low noise solid rubber wheel, without leaving marks
- > Screw fixed wheel axle, double ball bearings in ring mount
- > Galvanized steel bracket and wheel, grey solid rubber profiled tyre
- > Order qty: 1 pc



Wheel Ø	Load capacity	Without brake
Ø 100 mm	70 kg	670.02.532

Swivel castor, Ø 100 mm wheel, with Ø 13 mm socket cap hole

Photo shows version with brake



- > For use with Ø 12 mm socket cap
- > Precision bearing for smooth operation
- > Double ball bearing swivel head for smooth operation
- > Integral thread guard for reduced dirt/dust ingress
- > Silver grey RAL 7001 plastic housing, grey non-marking thermoplastic rubber wheel and red plastic brake
- > Order qty: 1 pc



> Ø 12 mm socket cap is shown on page 111

Wheel Ø	Load capacity	Without brake	With brake
Ø 100 mm	100 kg	661.64.501	661.64.511