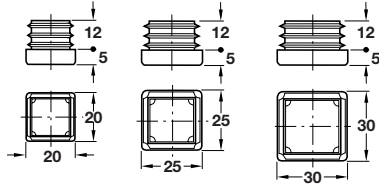
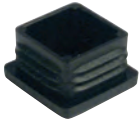


SQUARE PLUGS AND ADJUSTING SCREWS

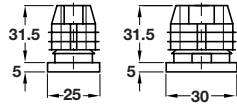
Square plug



- > Press fit into square tubes, 1.5-2 mm gauge
- > Black plastic
- > Order qty: Multiples of 100 pcs

Size	Cat. No.
20 x 20 mm	652.12.615
25 x 25 mm	652.12.624
30 x 30 mm	652.12.633

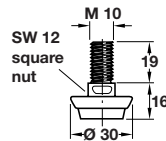
Square plug with M10 internal thread



- > For use with castors with M10 threaded bolts
- > For knock-in installation into square tubes, 1.5-2 mm gauge
- > Black plastic
- > Order qty: 1 pc

Size	Cat. No.
25 x 25 mm	652.11.627
30 x 30 mm	652.11.636

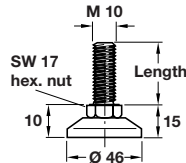
M10 adjusting screw



- > Suitable for use with furniture legs with M10 internal thread
- > Nickel-plated steel with black rubber base
- > Order qty: 1 pc

Size	Cat. No.
Ø 30 mm	651.02.909

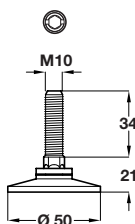
M10 adjusting screw with fixed foot



- > Suitable for use with glides and furniture legs with M10 internal thread
- > Can also be used in combination with knock in and threaded sleeves for other purposes such as staying a wall unit
- > Galvanized steel screw with black plastic foot
- > Order qty: 1 pc

Length	Cat. No.
30 mm	651.01.304
50 mm	651.01.500

M10 adjusting screw with fixed foot



- > Suitable for use with furniture legs with M10 internal thread
- > Hexagonal nut, M10 thread for single-slot screw-driver and allen key adjustment
- > Can also be used in combination with knock in and threaded sleeves for other purposes such as staying a wall unit
- > Galvanized steel screw with black plastic foot
- > Order qty: 1 pc

Length	Cat. No.
34 mm	637.61.300

COMPONENTS, FIXINGS AND CONSUMABLES 2014, © Häfele U.K. Ltd 2014. Dimensional data not binding. We reserve the right to alter specifications without notice.