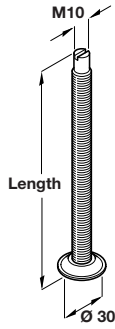


**M10 plinth adjusting screw**



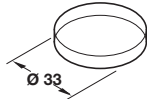
- > Slot in screw tip provides simple adjustment of plinth height using a screwdriver
- > Load capacity approx. 300 kg (static)
- > Galvanized steel
- > Order qty: Multiples of 100 pcs

Length	Cat. No.
45 mm	637.02.006
60 mm	637.02.009
70 mm	637.02.018
80 mm	637.02.027
90 mm	637.02.036
100 mm	637.02.045
120 mm	637.02.054



> Suitable screw on brackets, plates, sockets and T-nuts are shown on pages **120-121**

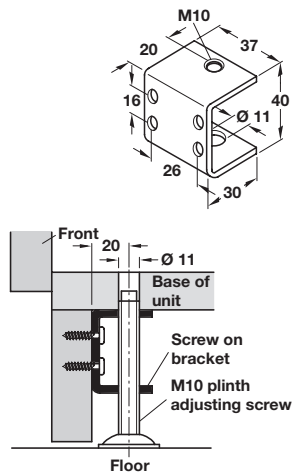
**Protective cap**



- > Press fits onto Ø 30 mm base plate of plinth adjuster shown above
- > Transparent plastic
- > Order qty: Multiples of 100 pcs

Size	Cat. No.
Ø 33 mm	637.02.090

**Screw on bracket**

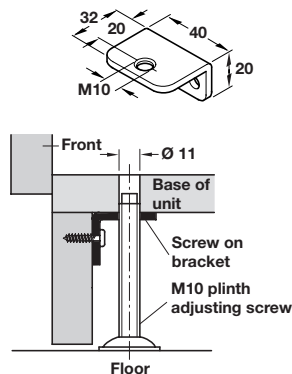
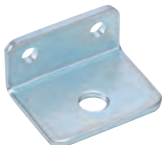


- > Galvanized steel
- > Order qty: 1 pc



Threaded hole	Cat. No.
M10	637.07.004

**Screw on bracket**



- > Galvanized steel
- > Order qty: 1 pc

Threaded hole	Cat. No.
M10	637.06.007