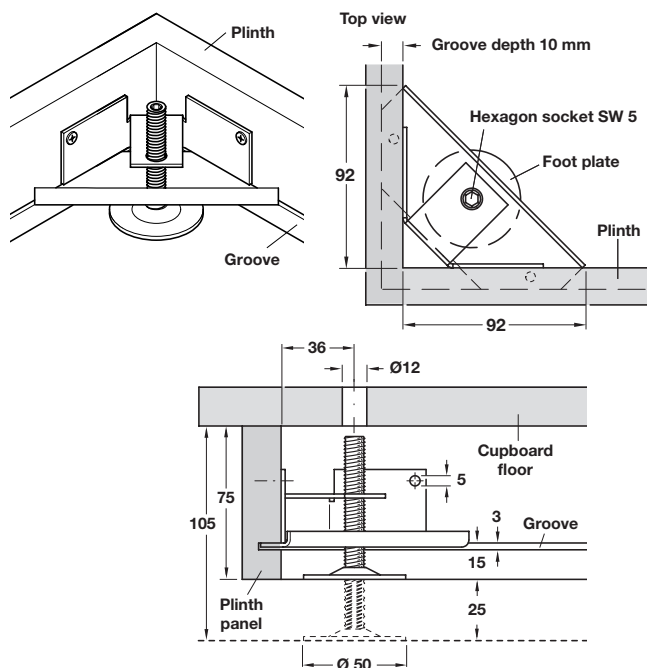
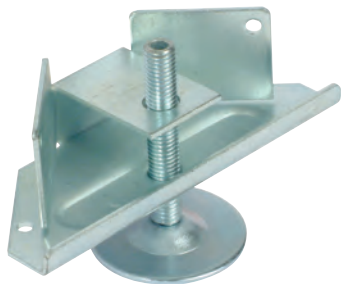


Plinth adjuster with bracket



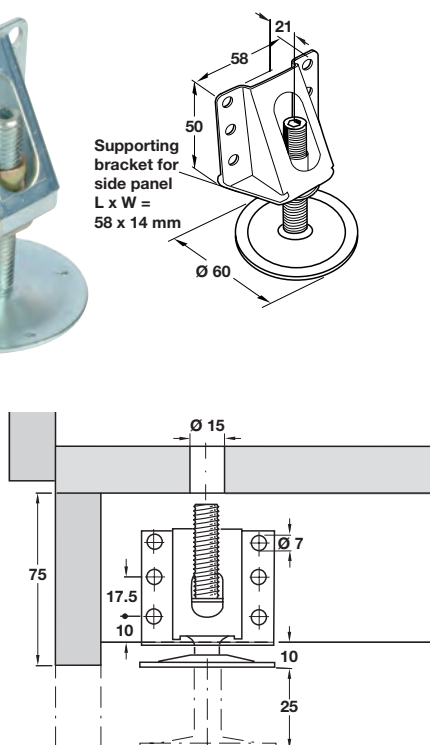
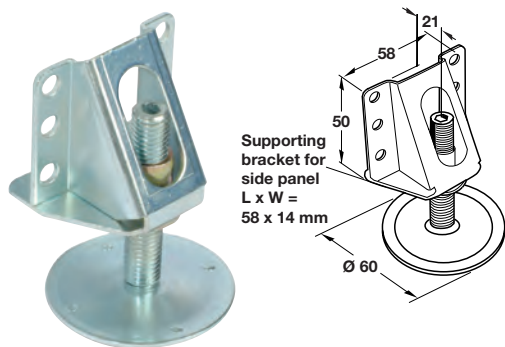
- > For cabinet plinth
- > For insertion in a groove and screw fixed
- > Adjustable from above through Ø 12 mm aperture in the cupboard floor
- > 25 mm adjustment
- > M10 x 70 mm threaded spindle with SW 5 socket head and swivelling Ø 50 mm base plate
- > Galvanized steel
- > Order qty: 1 pc



Load capacity
150 kg

Cat. No.
637.23.900

Partition adjuster with bracket



- > Adjustable from above through Ø 15 mm aperture in the cupboard floor
- > 25 mm adjustment
- > M12 x 65 mm threaded spindle with SW5 socket head and Ø 60 mm swivelling base plate
- > Galvanized steel
- > Order qty: 1 pc



Load capacity
200 kg

Cat. No.
637.67.900