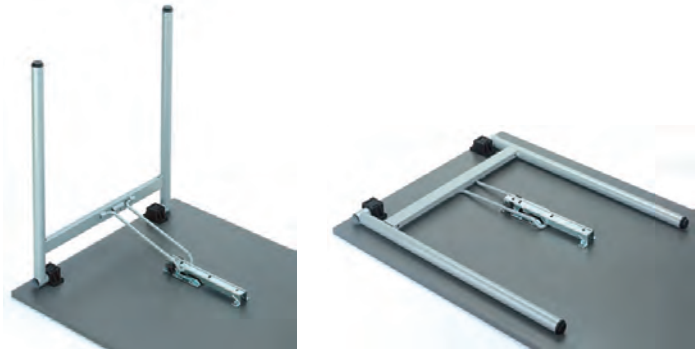


FOLDING TABLE FITTINGS

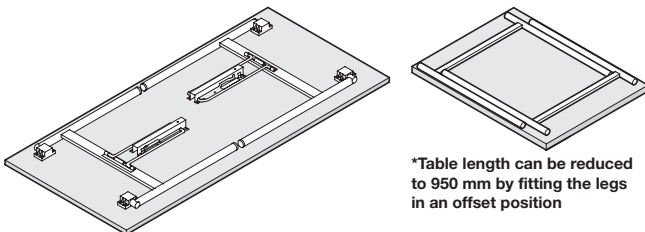
- > The table legs are folded by pressing the hinged strut. The design of this mechanism effectively prevents the play of the interlocking device
- > Once folded in, the legs are held securely by the interlocking springs
- > The upright table is protected from unintentional folding, as the hinged strut is pressed into the conically shaped groove of the interlocking device by the safety cams of the interlocking spring



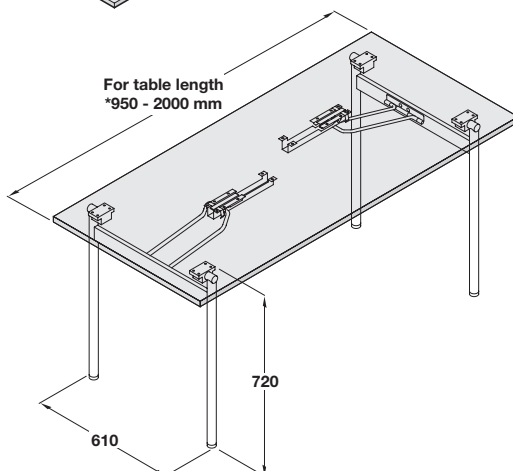
Folding table fitting, H frame



- > Locks in position, open and closed
- > Height when folded: 40 mm (without table top)
- > Adjustable glides +22 mm
- > Plastic coated zinc-plated tubular steel with black plastic components
- > Order qty: 1 set (for 1 table)



*Table length can be reduced to 950 mm by fitting the legs in an offset position



For table length
*950 - 2000 mm

Height	Silver coloured RAL 9006	Chrome-plated
720 mm	642.83.950	642.83.250

- > Load carrying capacity is dependent on the type of material, size and weight of the construction

