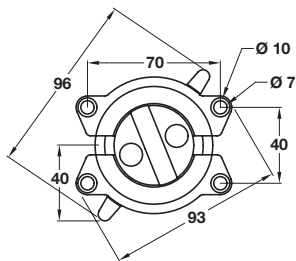


## TABLE CONNECTORS AND CORNER BRACES

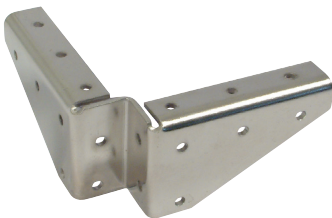
## Bench-type connector



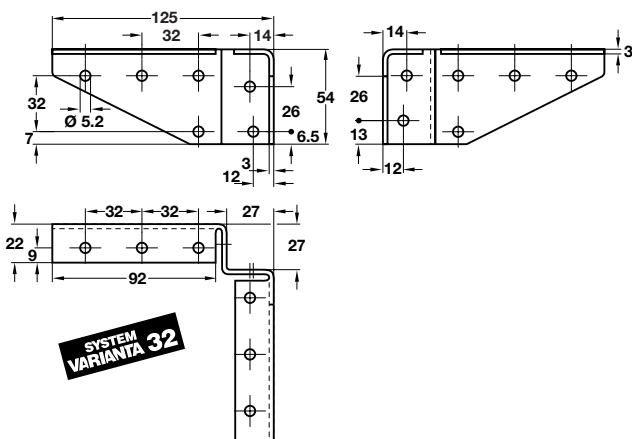
- > Universal
- > Consists of two identical parts which can connect table tops or other furniture components by simply turning the lever
- > Easy to mount
- > No loose parts
- > Catch positions for assembling interlinking tops and for transport
- > 2 pcs = 1 complete set
- > Zinc alloy
- > Order qty: Multiples of 2 pcs

Finish	Cat. No.
Nickel-plated	642.42.910

## Corner brace



- > For strong corner joints on all types of tables, shelves, cupboards, work benches, portable tables etc.
- > Unobstructed leg room under tables without a peripheral frame
- > Can be used with wood, metal or plastics
- > With extra screw fixing holes on the side
- > Steel
- > Order qty: 1 pc



Finish	Cat. No.
Nickel-plated	641.01.711