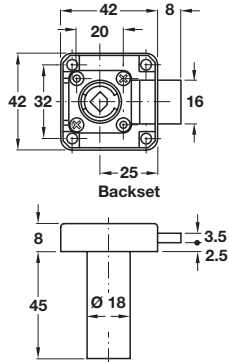


## Symo 3000 dead bolt rim lock



Right hand



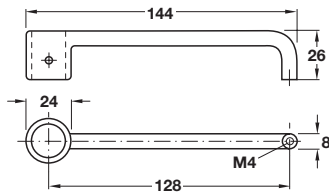
> Order lock handle 232.26.699 separately, shown below

- > With extended cylinder housing
- > For on-site installation of cylinder cores
- > Backset: 25 mm
- > Nickel-plated zinc alloy
- > Order qty: 1 pc



Version	Cat. No.
Left hand	232.26.612
Right hand	232.26.602
Drawer version	232.26.622

## Symo 3000 lock handle



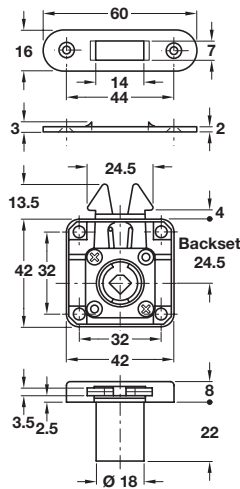
- > For use with rim lock with extended cylinder housing
- > For screw fixing (to cylinder housing with SW2 grub screws, handle end to door with M4 screw)
- > Zinc alloy
- > Order qty: 1 pc

Finish	Cat. No.
Nickel-plated	232.26.699

## Symo 3000 roller shutter rim lock case



> Roller shutter rim lock cores are only suitable for use with plate lever cylinder cores shown on page 194



- > For on-site installation of cylinder cores
- > Backset: 24.5 mm
- > Nickel-plated zinc alloy
- > Accessories: 1x steel striking plate
- > Order qty: 1 pc

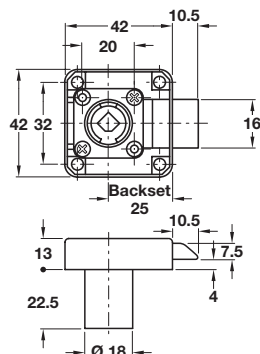


Version	Cat. No.
Drawer version	232.30.620

## Symo 3000 spring bolt rim lock case



Left hand



> Order cylinder rosette separately, shown on page 249

- > For on-site installation of cylinder cores
- > Backset: 25 mm
- > The bolt is fixed in the unlocked position
- > Nickel-plated zinc alloy
- > Order qty: 1 pc



Version	Cat. No.
Left hand	232.37.624
Right hand	232.37.623
Drawer	232.37.625