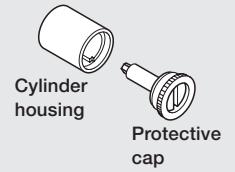


# SYMO 3000 GLASS DOOR CYLINDER LOCK CASE



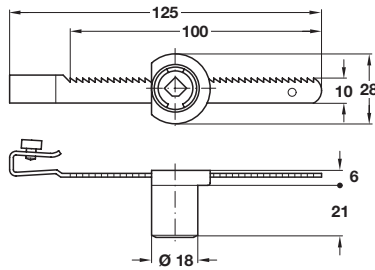
> The locks can be operated by turning the protective cap with a screwdriver or coin, before the cylinder cores are installed



## Symo 3000 glass door cylinder lock with rack



- > For glass panels from 4-7 mm
- > For on-site installation of cylinder cores
- > Zinc alloy housing
- > Stainless steel rack
- > Order qty: 1 pc



Housing finish	Cat. No.
Matt nickel-plated	233.44.600



- > Lock handles for Symo 3000 lock cases are shown on page **192**
- > Cylinder cores for Symo 3000 lock cases are shown on pages **193-196**

COMPONENTS, FIXINGS AND CONSUMABLES 2014, © Häfele U.K. Ltd 2014. Dimensional data not binding. We reserve the right to alter specifications without notice.