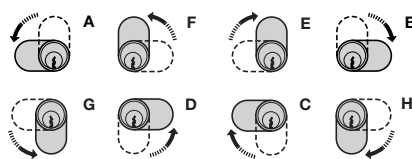
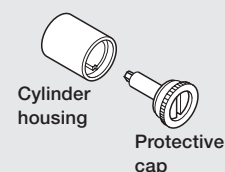


# SYMO 3000 GLASS DOOR LEVER LOCK CASES

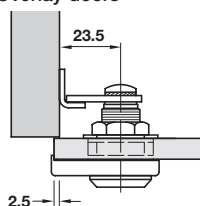
- > 90° Closure direction:
- > Closure directions can be altered by re-positioning the cam, but always moving in the same direction\*:  
Closure direction A can be altered to D, F or G  
Closure direction B can be altered to C, E or H



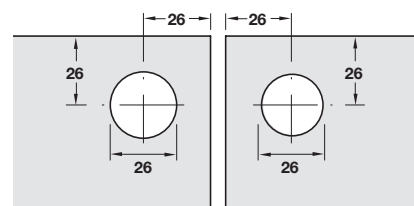
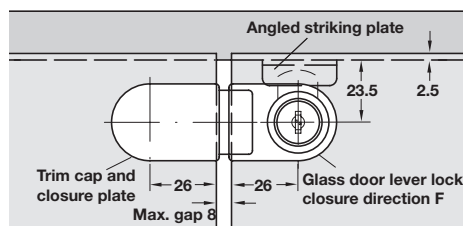
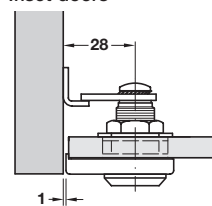
- > The locks can be operated by turning the protective cap with a screwdriver or coin, before the cylinder cores are installed



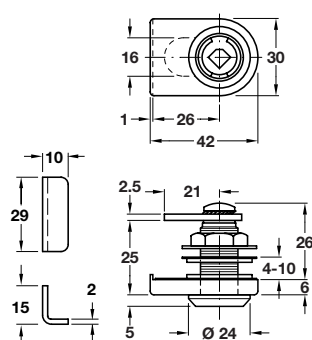
Overlay doors



Inset doors



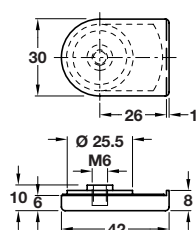
## Symo 3000 glass door lever lock case



- > For on-site installation of cylinder cores
- > For glass thickness 4-10 mm
- > Closure travel 90°, convertible\*
- > Zinc alloy
- > Accessories: 1x locking cam, 1x nut and 1x angled steel striking plate, 1x clamping plate and 1x clamping plastic rosette
- > Order qty: 1 pc

Closure direction	A (D, F, G*)	B (C, E, H*)
Polished nickel-plated	233.42.600	233.42.610
Matt nickel-plated	233.42.700	233.42.710

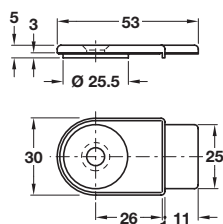
## Trim cap and closure plate



\*\*Threaded screws:

M6 x 10 mm  
for glass panels  
up to 8 mm

M6 x 12 mm  
for glass panels  
up to 10 mm



- > For use on double doors, opposite the lock
- > For glass panels from 4-10 mm\*\*
- > Use on left or right hand door
- > Zinc alloy
- > Accessories: 2x M6 threaded screws, 2x plastic clamping plates and 1x clamping element
- > Order qty: 1 pc

Finish	Cat. No.
Polished nickel-plated	233.40.712
Matt nickel-plated	233.40.610



- > Lock handles for Symo 3000 lock cases are shown on page **192**
- > Symo 3000 glass door lever lock cases are only suitable for use with plate lever cylinder cores shown on page **194**