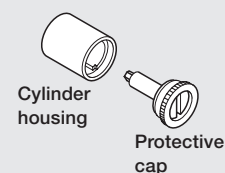


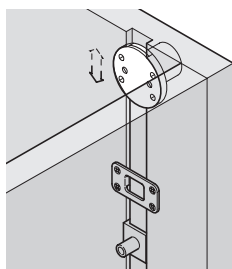
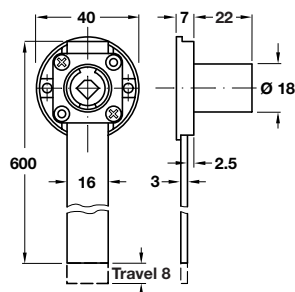
# SYMO 3000 CENTRAL LOCKING SYSTEM



- > The locks can be operated by turning the protective cap with a screwdriver or coin, before the cylinder cores are installed



## Symo 3000 central lock case

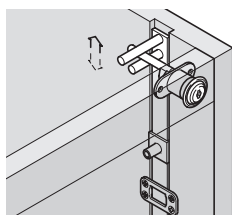
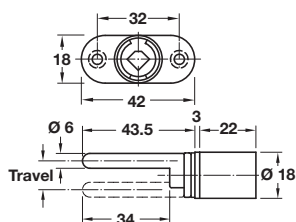


- > For on-site installation of cylinder cores
- > For recessing in the cabinet side panel
- > Bar can be cut to length
- > Zinc alloy lock with aluminium bar
- > Order qty: 1 pc



Finish	Cat. No.
Nickel-plated	237.48.600

## Symo 3000 central rotary lock case, twin wing

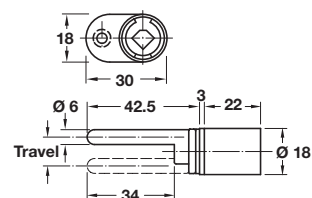


- > For on-site installation of cylinder cores
- > For installation in the front panel
- > With lifting pin, closure travel 180°
- > Zinc alloy
- > Order qty: 1 pc



Travel	12 mm	17 mm
Nickel-plated	234.98.600	234.98.610

## Symo 3000 central rotary lock case, single wing



- > For on-site installation of cylinder cores
- > For installation in the front panel
- > With lifting pin, closure travel 180°
- > Zinc alloy
- > Order qty: 1 pc



Travel	12 mm	17 mm
Nickel-plated	234.98.650	234.98.660



- > For all locks on this page order cylinder rosette separately, shown on page **249**
- > Lock handles for Sympo 3000 lock cases are shown on page **192**
- > Cylinder cores for Sympo 3000 lock cases are shown on pages **193-196**