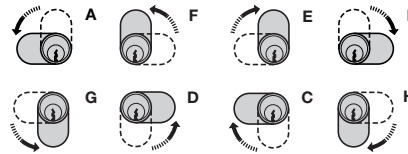
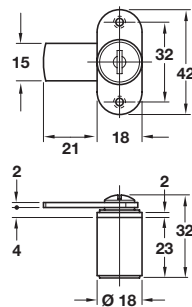


CYLINDER CAM LOCKS

- > 90° Closure direction:
- > Closure directions can be altered by re-positioning the cam, but always moving in the same direction:
Closure direction A can be altered to D, F or G
Closure direction B can be altered to C, E or H



Cylinder cam lock without key trap



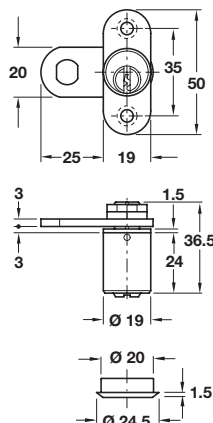
Right hand, direction A version

- > With Ø 18 mm cylinder
- > For vertical mounting
- > Closure travel 90°
- > Without key trap; key can be removed in open or locked position
- > 5 plate levers = 200 possible key changes
- > Matt nickel-plated zinc alloy mounting plate and cylinder
- > Galvanized steel lever
- > Accessories: 2x keys, 1x locking lever
- > Order qty: 1 pc

Closure direction	90° A (D,F,G)	90° B (C,E,H)
Random key changes	235.04.609	235.04.654
Keyed alike: Key change		
FH1	235.04.814	235.04.912
FH2	235.04.823	235.04.921
FH3	235.04.832	235.04.930
FH4	235.04.841	235.04.949
FH5	235.04.850	235.04.958

- > Order cylinder rosette separately, shown on page 249

Cylinder cam lock with key trap



Right hand, direction A version

- > With Ø 19 mm cylinder
- > For vertical mounting
- > Closure travel 90°
- > With key trap; key can only be removed in locked position
- > 5 pairs of pin tumblers = 10,000 possible key changes
- > Galvanized steel locking lever and securing nuts
- > Matt nickel-plated zinc alloy mounting plate
- > Matt nickel-plated brass cylinder
- > Accessories: 2x keys, 1x cylinder rosette, 1x locking lever and 2x securing nuts
- > Order qty: 1 pc

Closure direction	90° A (D,F,G)	90° B (C,E,H)
Random key changes	235.03.602	235.03.657
Keyed alike: Key change		
H1	235.03.817	235.03.915
		Cat. No.
With master key system		235.03.698
With general master key system		235.03.699

- > Master key and general master key systems:
Please discuss with our sales staff before ordering, state closure direction required