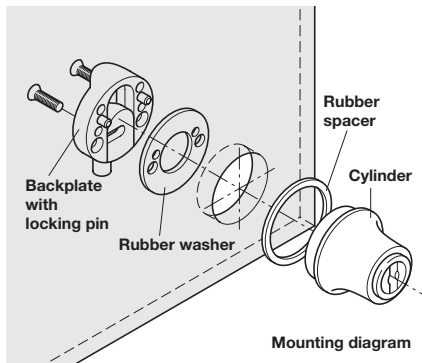
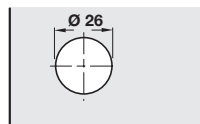
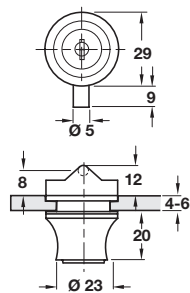


LOCKS FOR HINGED GLASS DOORS



Glass door cylinder locks



Glass aperture diagram

- > For hinged, overlay doors only
- > With locking pin and screw fixing backplate
- > For glass panels from 4-6 mm
- > Non-removable cylinder
- > 6 plate levers = 1,000 possible key changes
- > Matt nickel-plated zinc alloy housing and cylinder
- > Accessories: 2x keys, 2x rubber washers and 2x threaded screws
- > Order qty: 1 pc

Key type

Cat. No.

Random key changes PL3001

233.05.700

Keyed alike: Key change N 7921 PL

233.05.701