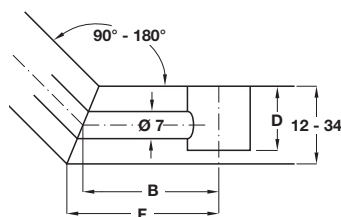


# TOOLS FOR MINIFIX GV CONNECTORS

ixconnect



> Use Minifix connector housing without rim



The inset distance F in mm in the table apply to mitre-joint connectors with drilling distance B 44 mm

For drilling distance B 24 mm, 20 mm must be deducted from the specified inset distance F

The dimension for drilling depth D corresponds to drilling depth D of the Minifix connector housing that is used

Table for inset distance F in mm for double-sided installation, double-ended bolt

Mitre angle	Wood thickness mm											
	12	13	16	17	19	20	22	23	26	29	32	34
90°	50.0	50.5	52.0	52.5	53.5	54.0	55.0	55.5	57.0	58.5	60.0	61.0
100°	49.0	49.5	50.7	51.1	52.0	52.4	53.2	53.6	54.9	56.2	57.4	58.3
110°	48.2	48.6	49.6	50.0	50.7	51.0	51.7	52.1	53.1	54.2	55.2	56.0
120°	47.5	47.8	48.6	48.9	49.5	49.8	50.4	50.6	51.5	52.4	53.2	53.8
130°	46.8	47.0	47.7	48.0	48.4	48.7	49.1	49.4	50.1	50.8	51.5	51.9
135°	46.5	46.7	47.3	47.5	47.9	48.1	48.6	48.8	49.4	50.0	50.6	51.1
140°	46.2	46.4	46.9	47.1	47.5	47.6	48.0	48.2	48.8	49.3	49.8	50.2
150°	45.6	45.7	46.1	46.2	46.5	46.7	46.9	47.1	47.5	47.9	48.3	48.6
160°	45.0	45.1	45.4	45.5	45.7	45.8	45.9	46.0	46.3	46.6	46.8	47.0
170°	44.5	44.6	44.7	44.7	44.8	44.9	44.0	45.0	45.2	45.3	45.4	45.5
180°	44.0	44.0	44.0	44.0	44.0	44.0	44.0	44.0	44.0	44.0	44.0	44.0

## Precision drilling jig

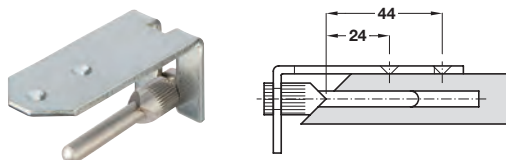


- > For the required Ø 7 mm hole
- > Comprises: Angle stop with 0 -80 mm measuring scale for inset interval adjustment, drill-guide suitable for wood thicknesses of 16,19, 23 and 29 mm, socket head screw to secure drill-guide
- > Zinc alloy with hardened drilling bushes
- > Order qty: 1 set

For drill hole  
Ø 7 mm

Cat. No.  
001.27.202

## Precision marking gauge



- > For Ø 15 mm housing holes
- > Comprises: Guide pin with two pointed stops, marking jig with locating hole for marking centre of housing
- > Hardened steel
- > Order qty: 1 set

For hole  
Ø 15 mm

Cat. No.  
001.27.211

## HSS twist drill bit



- > For Ø 7 mm bolt holes
- > Order qty: Multiples of 10 pcs

For drill hole  
Ø 7 mm

Cat. No.  
001.41.220