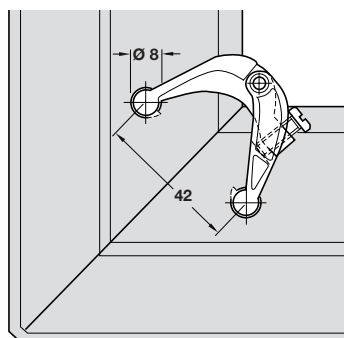
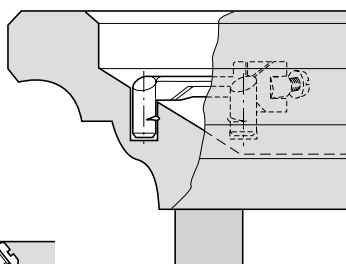
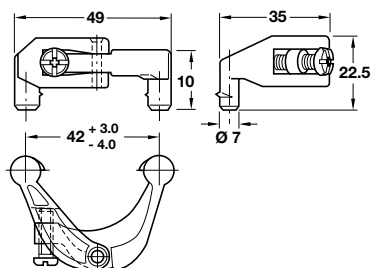


## Mitre joint connector

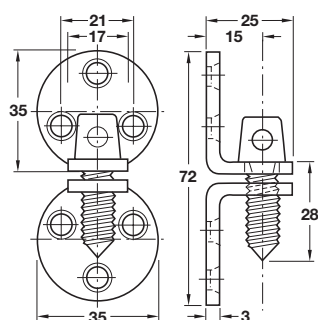


- > For cornice profiles
- > The scissor-type jointed fitting has plug ends which are inserted into Ø 8 mm holes; tightening the screw then draws the mitre joint faces securely together
- > Bright zinc alloy
- > Order qty: 1 pc

Finish  
Bright

Cat. No.  
262.01.007

## Hamburg-style connector



- > Heavy-duty fitting which is suitable for a wide variety of applications
- > Comprises: 2x Ø 35 mm mounting plates, surface mounted or recessed which are pulled together with a capstan screw to make a permanent, tight-fitting joint, the capstan screw head is tightened with a steel pin
- > Steel
- > Order qty: Multiples of 50 pcs



> Hospa screws are shown on pages **388-393, 402**

Finish  
Brass-plated

Cat. No.  
262.54.500