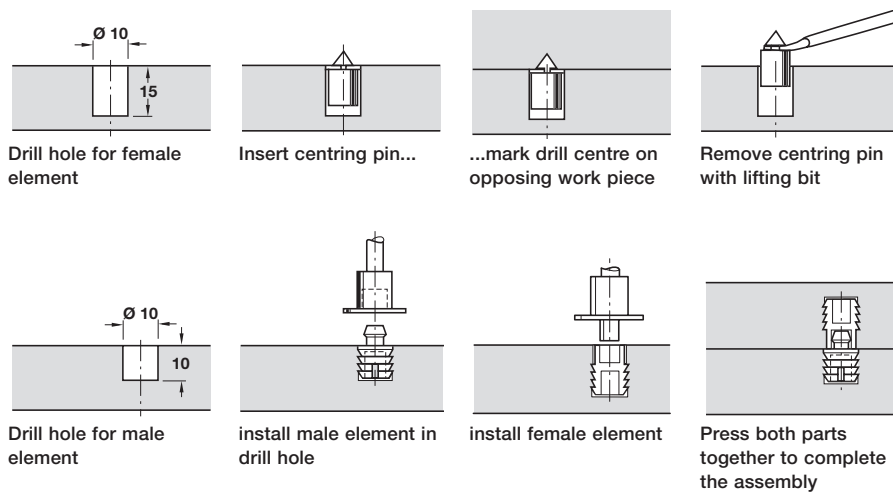


### PRESS-FIT DOWEL CONNECTORS



Drill hole for female element

Insert centring pin...

...mark drill centre on opposing work piece

Remove centring pin with lifting bit

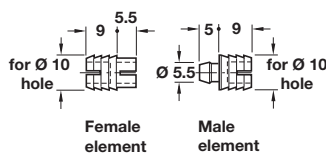
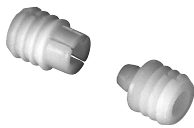
Drill hole for male element

install male element in drill hole

install female element

Press both parts together to complete the assembly

#### Two piece dowel connector, press-fit



Female element

Male element

- > For concealed fastening without nails or screws
- > Can be disconnected at any time and with parting resistance of up to 15 kg
- > Female element has four slots, male element incorporates a tapered plug which locks into position, ensuring a secure seat in the material and a strong joint
- > Natural coloured polyamide
- > Order qty: Multiples of 100 pcs



> Special tools and centring pin must be ordered separately for installation of press-fit connector, shown below

Type	Cat. No.
2	267.20.700

#### Centring pin



- > For installation of press fit connector
- > Bright steel
- > Order qty: Multiples of 10 pcs

Cat. No.
Centring pin
006.47.067

#### Set of tools



- > For installation of press fit connector
- > Comprising:
  - 1x handle
  - 1x lifting bit for centring pin
  - 1x punch (male)
  - 1x punch (female)
- > Order qty: 1 set

Cat. No.
Set of tools
006.47.003