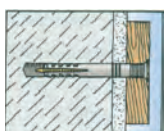
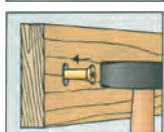
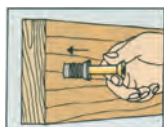
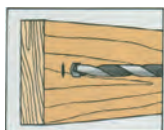


WINDOW FITTING SCREWS AND PACKING SHIMS

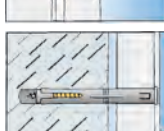
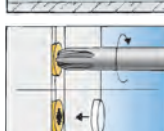
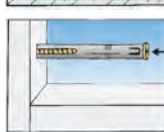
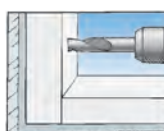
Fischer Hammerfix N Z with zinc-plated drive screw



- > Suitable for: Concrete, solid bricks, perforated bricks, hollow blocks, and aerated concrete (aircrete)
- > For fixing of: Timber battens, frames, roof edge, wall connection or plaster profiles, skirting boards, wall angles, cable ducts, cable and pipe clips, sheets, etc.
- > Pre-assembled
- > Order qty: Multiples of 50 pcs

Type	Drill Ø	Min. hole depth	Plug length	Screw size	Cat. No.
N6 x 60 Z	6 mm	75 mm	60 mm	4 x 64 mm	051.41.015
N8 x 80 Z	8 mm	95 mm	80 mm	5 x 85 mm	051.41.024
N8 x 100 Z	8 mm	115 mm	100 mm	5 x 105 mm	051.41.033
N8 x 120 Z	8 mm	135 mm	120 mm	5 x 125 mm	051.41.040

Fischer window fixing TL



- > With zinc-plated wood screw for pozi bit size 2 or 3
- > Includes white caps
- > Pre-assembled
- > Order qty: Multiples of 50 pcs

Type	Drill Ø	Min. hole depth	Max. frame thickness	Screw size	Cat. No.
TL PVCu FIX 8x100	8 mm	115 mm	50 mm	8 x 100 mm	051.76.001
TL PVCu FIX 8x120	8 mm	135 mm	70 mm	8 x 120 mm	051.76.002
TL PVCu FIX 10x100	10 mm	115 mm	40 mm	10 x 100 mm	051.76.005
TL PVCu FIX 10x120	10 mm	135 mm	60 mm	10 x 120 mm	051.76.006