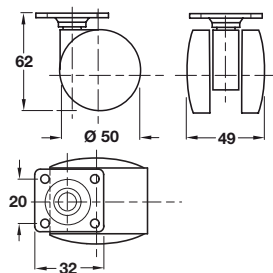


## Twin wheel swivel castor, Ø 50 mm wheels, plate fixing

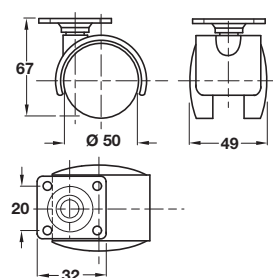


- > With 32 x 32 mm mounting plate
- > 20 x 20 mm screw hole distances
- > Matt black plastic
- > Order qty: 1 pc



Wheel Ø	Load capacity	Without brake
Ø 50 mm	45 kg	660.62.351

## Twin wheel swivel castor, hooded, Ø 50 mm wheels, plate fixing



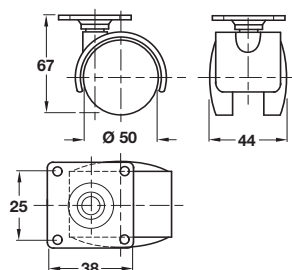
- > With 32 x 32 mm mounting plate
- > 20 x 20 mm screw hole distances
- > Matt black plastic
- > Order qty: 1 pc



Wheel Ø	Load capacity	Without brake	With brake
Ø 50 mm	45 kg	660.62.352	660.62.353

Photo shows version without brake

## Twin wheel swivel castor, hooded, Ø 50 mm wheels, plate fixing



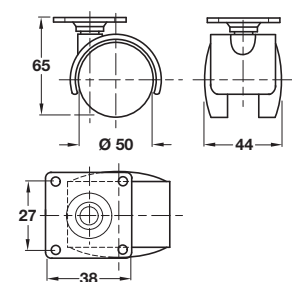
- > With 38 x 38 mm mounting plate
- > 25 x 25 mm screw hole distances
- > Matt black plastic
- > Order qty: 1 pc



Wheel Ø	Load capacity	Without brake	With brake
Ø 50 mm	45 kg	660.63.352	660.63.353

Photo shows version without brake

## Twin wheel swivel castor, hooded, Ø 50 wheels, plate fixing



- > With 38 x 38 mm mounting plate
- > 27 x 27 mm screw hole distances
- > Matt black plastic
- > Order qty: 1 pc



Wheel Ø	Load capacity	Without brake	With brake
Ø 50 mm	45 kg	660.65.352	660.65.353

Photo shows version with brake