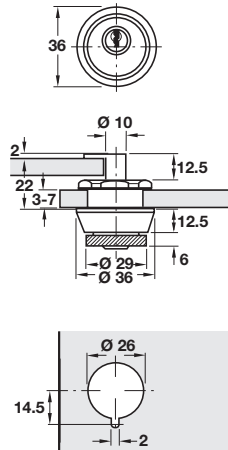
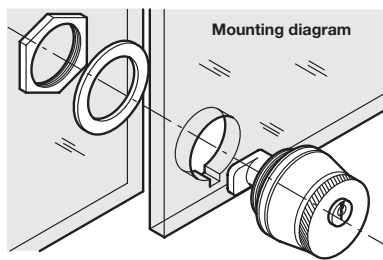


Push and turn cylinder lock



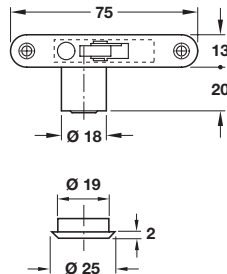
Glass aperture diagram



- > For straight sliding doors only
- > With nut attachment
- > For glass panels from 3-7 mm
- > 5 pairs of pin tumblers = 10,000 possible key changes
- > Matt chrome-plated brass housing and cylinder
- > Locking pin with plastic lever
- > Accessories: 2x keys, 2x rubber washers and 1x nut
- > Order qty: 1 pc

Key type	Cat. No.
Keyed alike: Key change H1	233.26.101

Cylinders, Ø 18 mm



- > For use with roller shutter mortice lock case A
- > 5 pairs of pin tumblers = 10,000 possible key changes
- > Matt nickel-plated brass
- > Accessories: 2x keys and 1x cylinder rosette
- > Order qty: 1 pc



Key type	Cat. No.
Keyed alike: Key change H1	230.23.201