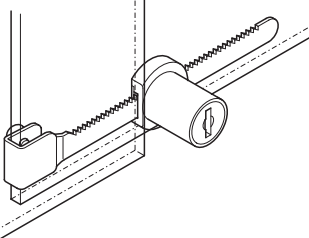
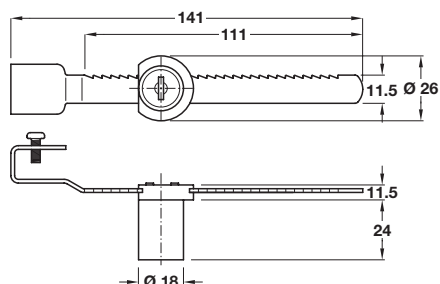


Econo glass sliding door lock



For infront glass sliding doors:
Rack is clamped on to the rear glass panel. Clip on lock and allow to engage in the rack. In order to unlock, remove the lock from the rack and put aside.

- > For glass door thickness: 4-7 mm
- > With 6 plate levers
- > Key change: 120 different key changes possible
- > Rack for clip fixing, cylinder for sliding on to rack
- > Standard profile
- > Supplied with:
 - 1x Lock housing
 - 1x Rack
 - 2x Folding keys
- > Polished chrome-plated zinc alloy housing, stainless steel rack
- > Order qty: 1 pc

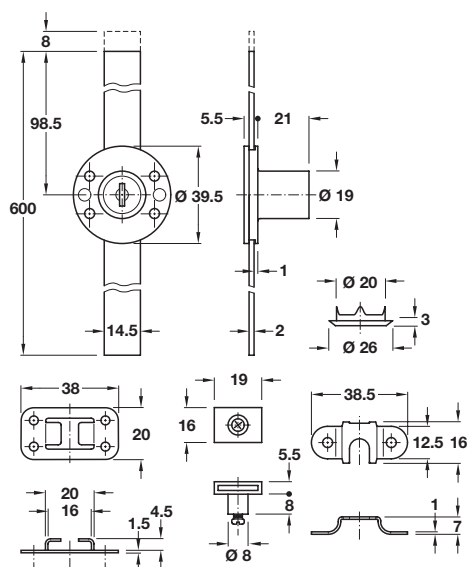
Cat. No.

Key change - Keyed different

Glass sliding door lock

233.20.220

Econo central locking rotary cylinder lock



- > With pre-mounted 600 mm locking bar
- > With 6 plate levers
- > Key change: 120 different key changes possible
- > Closure travel: 180°
- > For screw fixing
- > Standard profile
- > Supplied with:
 - 1x Central locking rotary cylinder lock with locking bar
 - 1x Cylinder rosette
 - 2x Bar guides
 - 3x Arresting pins
 - 3x Drawer locking plates
 - 2x Folding keys
- > Polished chrome-plated zinc alloy housing and cylinder, aluminium bar
- > Order qty: 1 pc

Lift

Cat. No.

Key change - Keyed different

8 mm

237.68.600