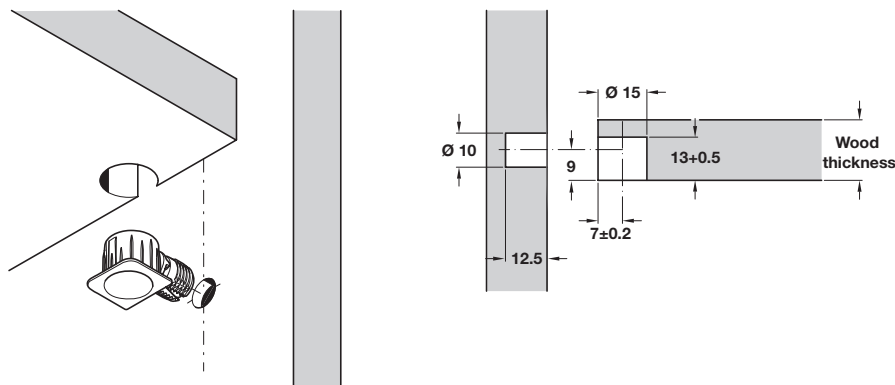


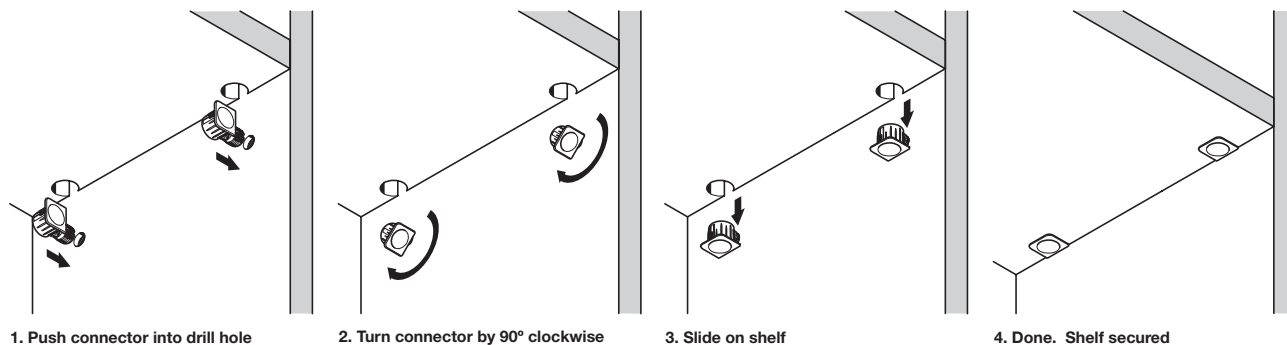
K.D. SHELF CONNECTOR

For installation of shelves without tools

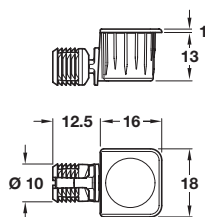
- > The plastic sleeve spreads in the drill hole by a 180° turn and provides a secure and permanent connection
- > No tools are required for installing the one-piece connector. Therefore it is particularly suitable for mounting shelves quick and easily



Installation



Turn fastener shelf connector, plug-fit



- > Press-fit into Ø 15 mm hole
- > For wood thickness from 18 mm
- > Nickel plated zinc
- > Order qty: Multiples of 100 pcs



> Only suitable for use with MDF board and chipboard

For wood thickness from
18 mm

Nickel plated
263.87.600