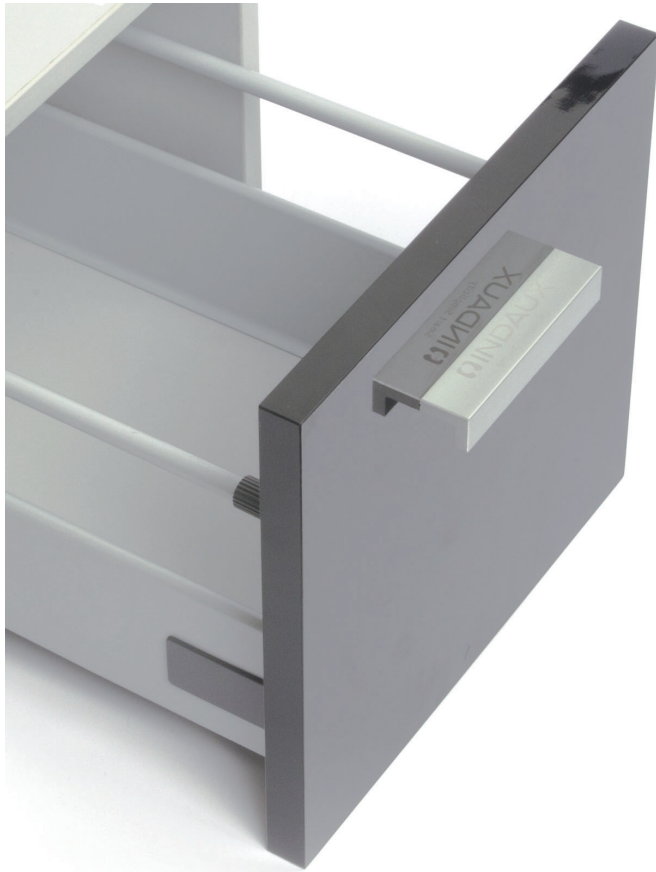
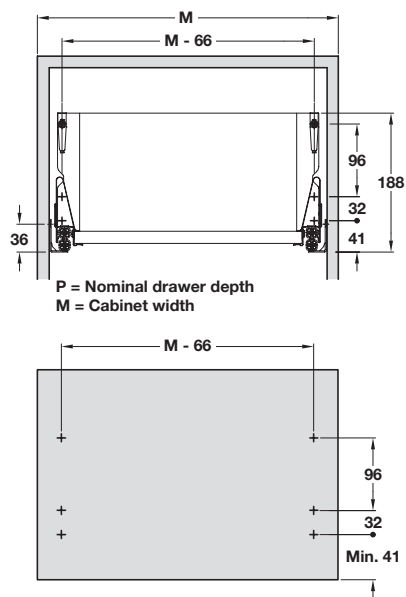


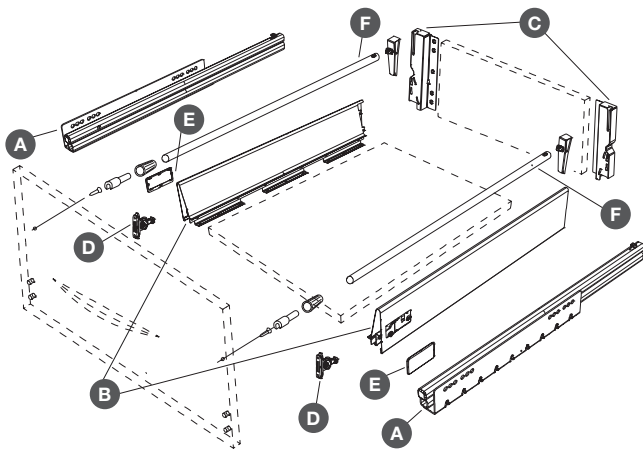
INDAUX ATTRACTION TWIN WALLED PAN DRAWER SYSTEM



- > All parts supplied in one box
- > Quick to assemble and install
- > Standard drawer 87 mm high
- > Pan drawer suits 16 mm drawer base and rear panel
- > Runners are full extension with Indamatic gradual soft closing system incorporated
- > Drawer fronts are adjusted from on the side, neatly concealed by a plain trim cap



Indaux Attraction twin walled pan drawer sets



- > Set consists of:
 - A Pair of runners, 50 kg carrying capacity, full extension with Indamatic gradual soft closing system
 - B Drawer sides
 - C Wood adaptors for high backs
 - D Front fixing brackets with mounting screws
 - E Covers
 - F Lateral tubes with corresponding fixing brackets and caps
- Fitting instructions
- > Galvanized steel runners with powder coated or stainless steel drawer sides
- > Order qty: 1 set



For drawer length	Stainless steel	Silver	Graphite
480 mm	554.37.015	554.37.915	554.37.315

YOU ALSO NEED:

- DRAWER FRONT**
Supplied by customer
- DRAWER BACKS & BASES**
Supplied by customer
- OPTIONAL ACCESSORIES**
Pages 101-103, 148-149, 154

DRAWER SYSTEMS, STAYS AND HINGES 2015, © Häfele U.K. Ltd 2015. Dimensional data not binding. We reserve the right to alter specifications without notice.