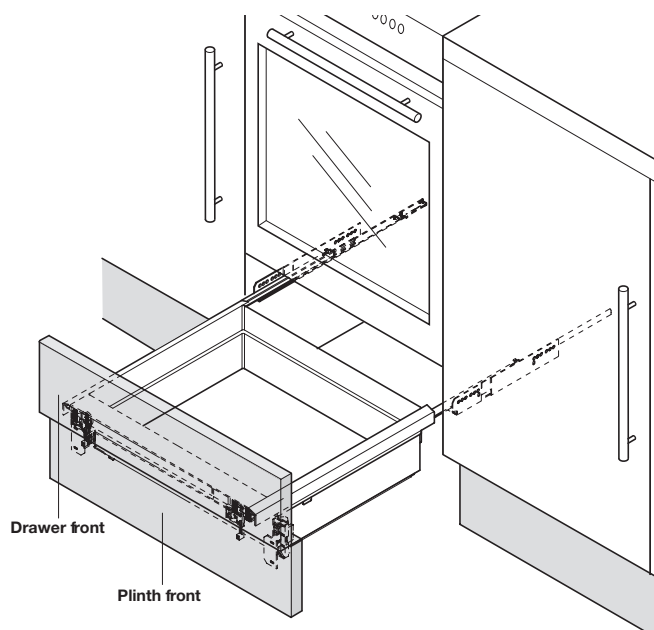
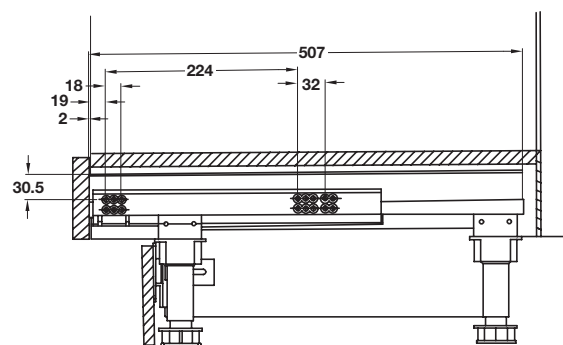
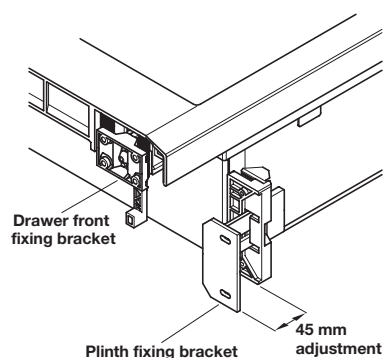
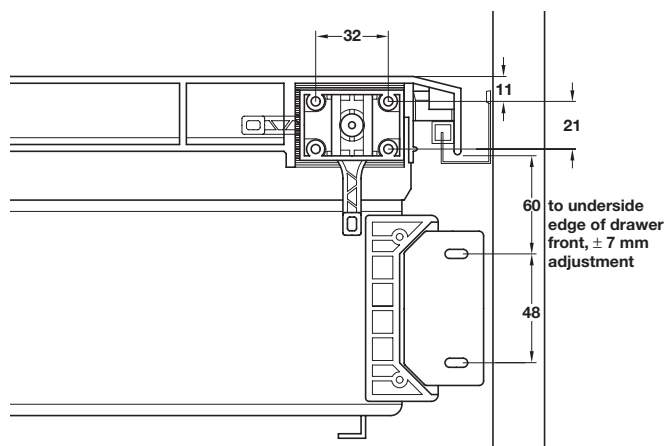
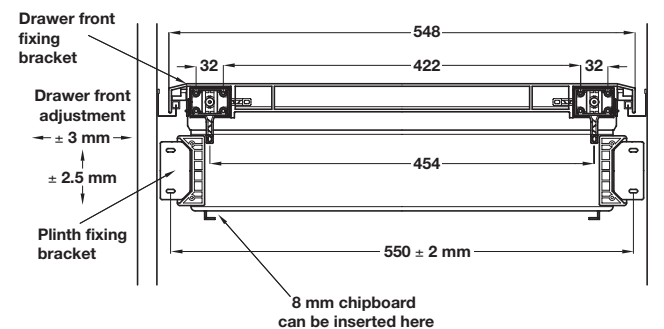


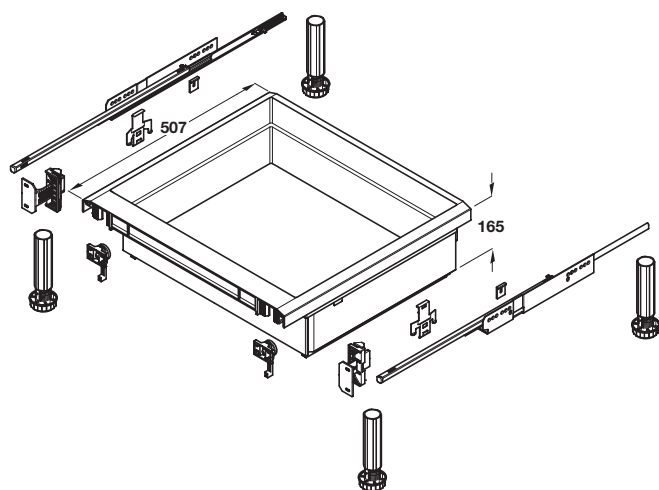
MOULDED PLASTIC DRAWER SYSTEM

Complete set includes 507 mm grey moulded plastic drawer, Dynamic runners, plinth feet and drawer front fixings.





Under oven drawer set



- > Fits beneath a single built-under oven, utilising the bottom of the cabinet and the plinth
- > For 600 mm cabinet width
- > Runners are completely concealed beneath the drawer base and cannot be seen when fully extended
- > Runners are for 19 mm board thickness, plastic spacers are included for other board thicknesses
- > Set includes:
 - 1x Drawer, aluminium/grey coloured plastic, designed to accept 8 mm chipboard base if required
 - 1x pair Dynamic runners, galvanized steel, full extension, soft closing runners, load capacity 30 kg
 - 2x Drawer front fixing brackets, white plastic, screw fixed to drawer front and locked in place by turning lever
 - 2x Plinth fixing brackets, white plastic, with 45 mm adjustment
 - 2x Runner fixing clips, white plastic. To be fitted within drawer side either in 15/16 or 18/19 mm position
 - Spacers, white plastic, 2 each 1 and 3 mm thickness included for use with runners where board thicknesses are other than 19 mm
 - 4x Plinth feet, includes adaptors to fit underneath the cabinet sides
- > Order qty: 1 set



For cabinet width
600 mm

Cat. No.
558.61.536