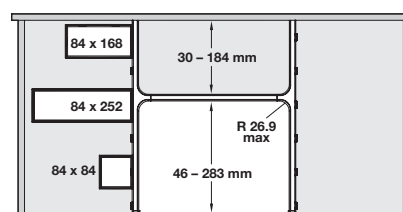
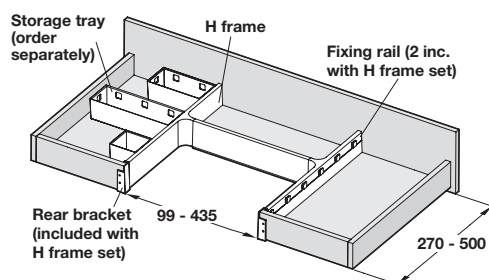


## BANIO STORAGE SYSTEM FOR UNDER SINK DRAWERS

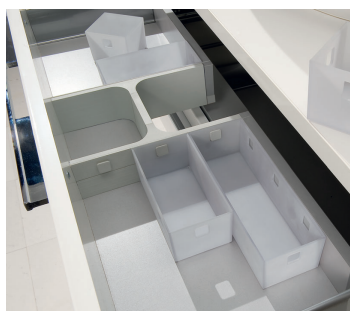
Suitable for drawers, the Banio system consists of a unique H-shaped frame to conceal cut outs required for sink waste pipework, as well as storage trays that can be configured to suit individual requirements and removed or swapped at any time.



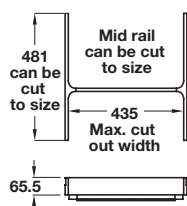
- > Storage trays are impact resistant, easy-to-clean and come in three different sizes. Can also be placed free standing
- > The H frame can be cut to size (side parts and mid rail) and therefore can be made to fit in a wide range of drawer types and sizes
- > The additional fixing rail can be fixed against a flat surface, such as tiles, cabinet rear wall, so that storage trays can be used to create alternative storage solutions



## Banio H frame set



In a drawer - H frame, storage trays



- > For use in drawers with 16 mm base and rear panel
- > H-frame as supplied suits 500 mm deep MX or Grass drawers but can be cut to size (both depth and width) to suit a wide range of other drawer types and sizes
- > Comprises 1x H-frame; left and right part, mid rail. 2x Brackets for screw fixing 16 mm rear panel in place. 2x Fixing rails (505 mm to cut to size) for holding storage trays in place. Fitting instructions
- > Order storage trays separately to suit requirements
- > Note: Bespoke sizes available, min. order qty. 50 sets
- > Order fixing screws separately
- > Order qty: 1 set



Finish	Cat. No.
White	556.23.704
Light grey	556.23.504

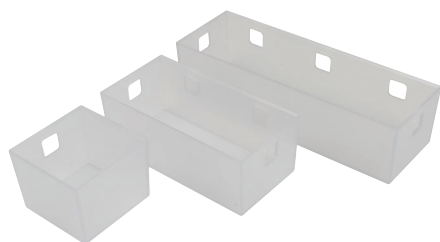
## Additional fixing rail for storage trays



- > Length x height x depth: 505 x 27 x 8 mm
- > Fix to flat surface such as cabinet wall with double-sided adhesive tape or glue, ensure adhesive used is suitable for application
- > Plastic
- > Order qty: 1 pc

Finish	Cat. No.
White	556.23.790
Light grey	556.23.590

## Banio storage tray



- > Can be used free standing, or slots onto fixing rail
- > White translucent plastic
- > Order qty: 1 pc

Height x width x depth	Cat. No.
65 x 84 x 84 mm	556.23.720
65 x 168 x 84 mm	556.23.721
65 x 251 x 84 mm	556.23.722