

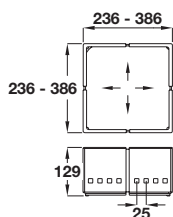
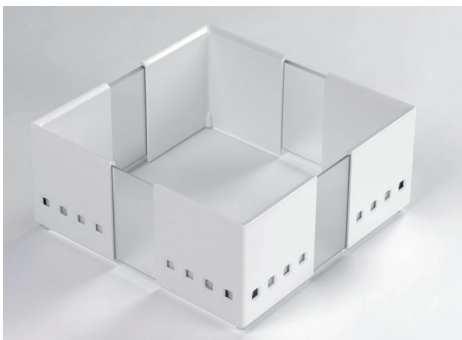
CUISIOFLEX DRAWER INSERTS

For organising plates, dishes, pots, pans, packets, jars and other kitchen items. Telescopic design makes these inserts exceptionally flexible and can be used in all popular drawer sizes and styles.



DRAWER SYSTEMS, STAYS AND HINGES 2015, © Häfele U.K. Ltd 2015. Dimensional data not binding. We reserve the right to alter specifications without notice.

CuisioFLEX drawer insert set



- > Set of three expandable plastic frames, with non-slip feet
- > 236-386 mm deep/wide, for use in all popular drawer sizes and styles
- > Suitable for min. 800 mm drawer widths
- > Aluminium-grey corners with middle sections in frosted green, graphite or frosted white, or white corners with frosted white middle sections
- > Order qty: 1 set (set consists of 3 frames)

Finish of corners/Mid sections	Cat. No.
Aluminium-grey/Frosted green	556.81.503
Aluminium-grey/Graphite	556.81.533
Aluminium-grey/Frosted white	556.81.573
White/Frosted white	556.81.773